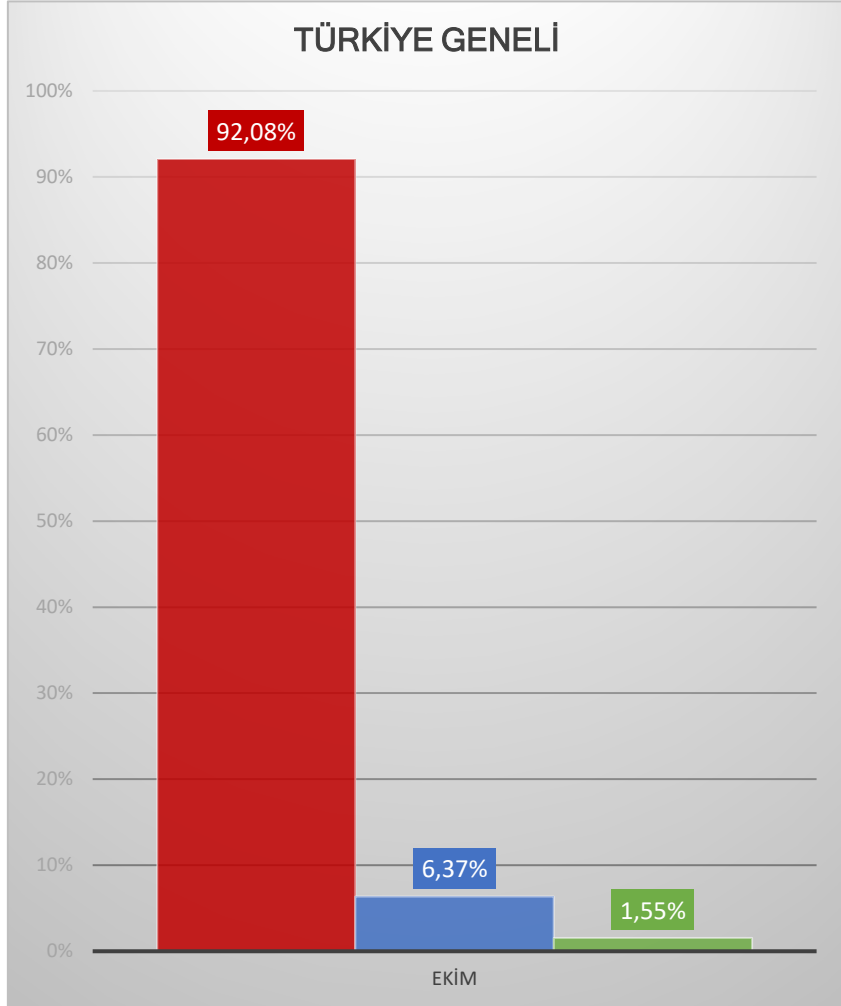
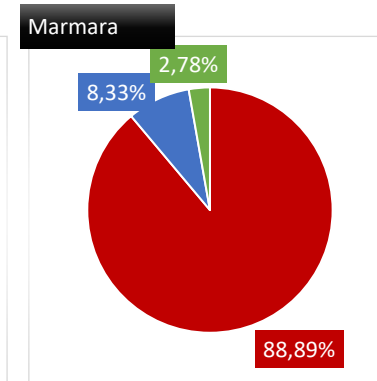
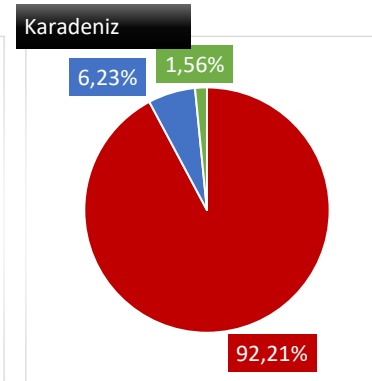
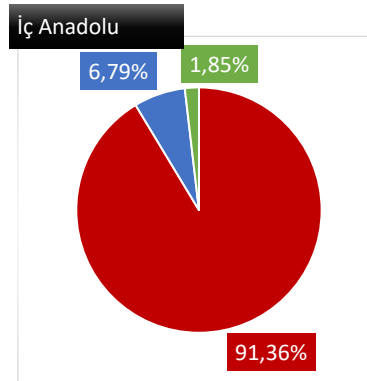
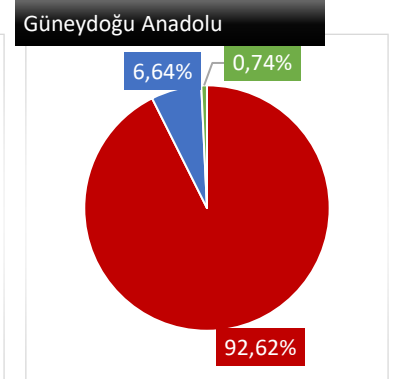
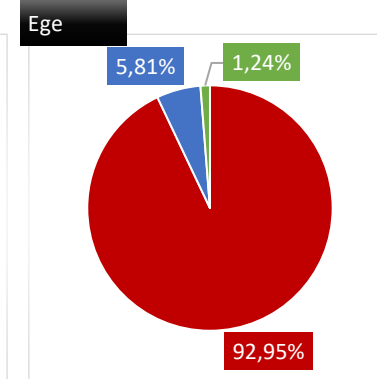
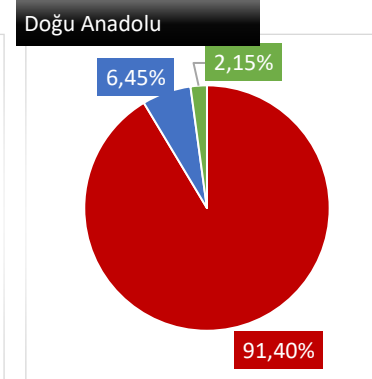
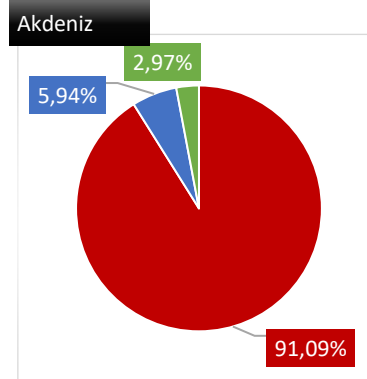


Ekim 2024 anket sonuları

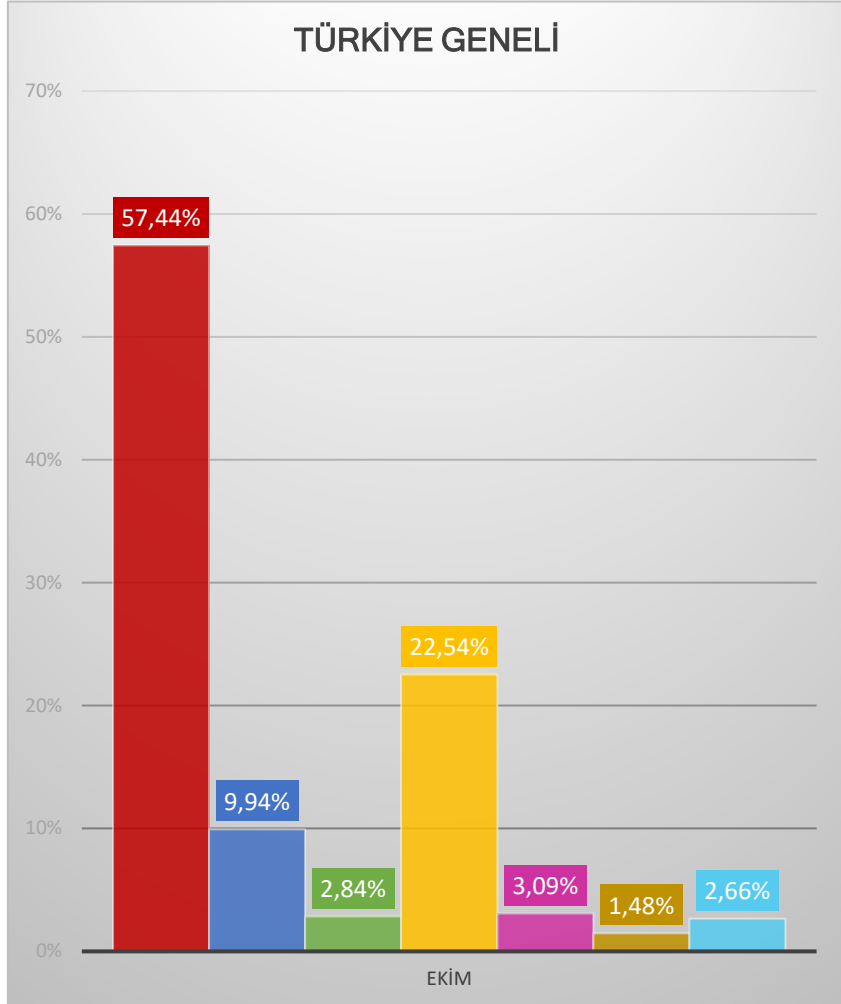
Zonanın ciddi bir hastalık olduğunu düşünüyor musunuz?



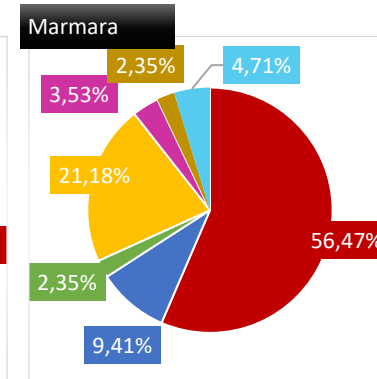
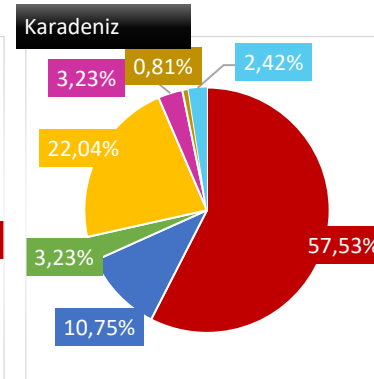
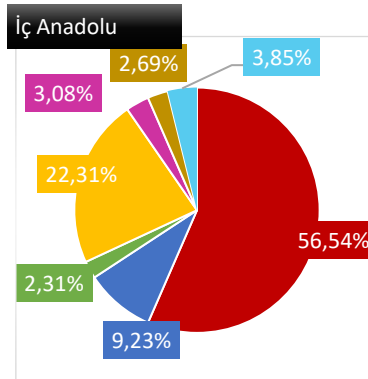
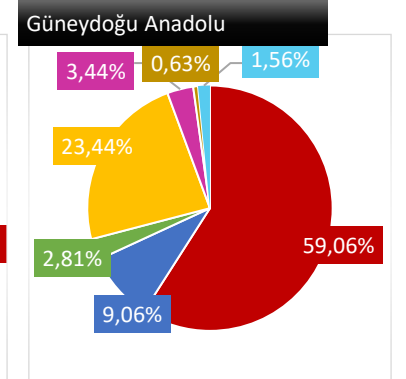
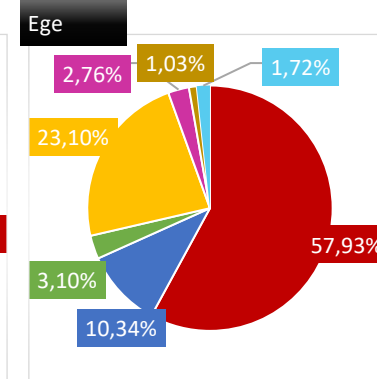
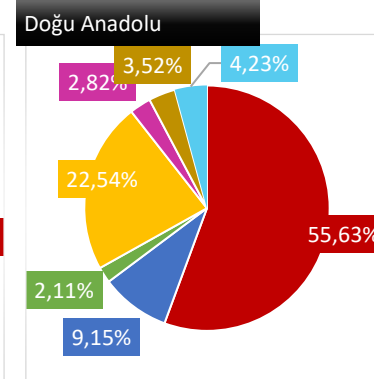
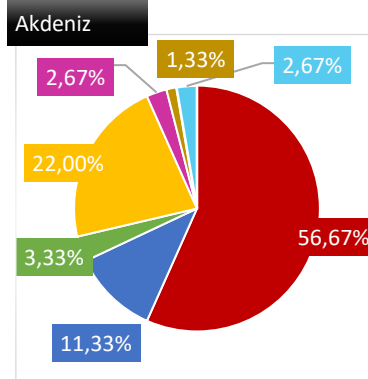
- Evet
- Hayır
- Kararsızım



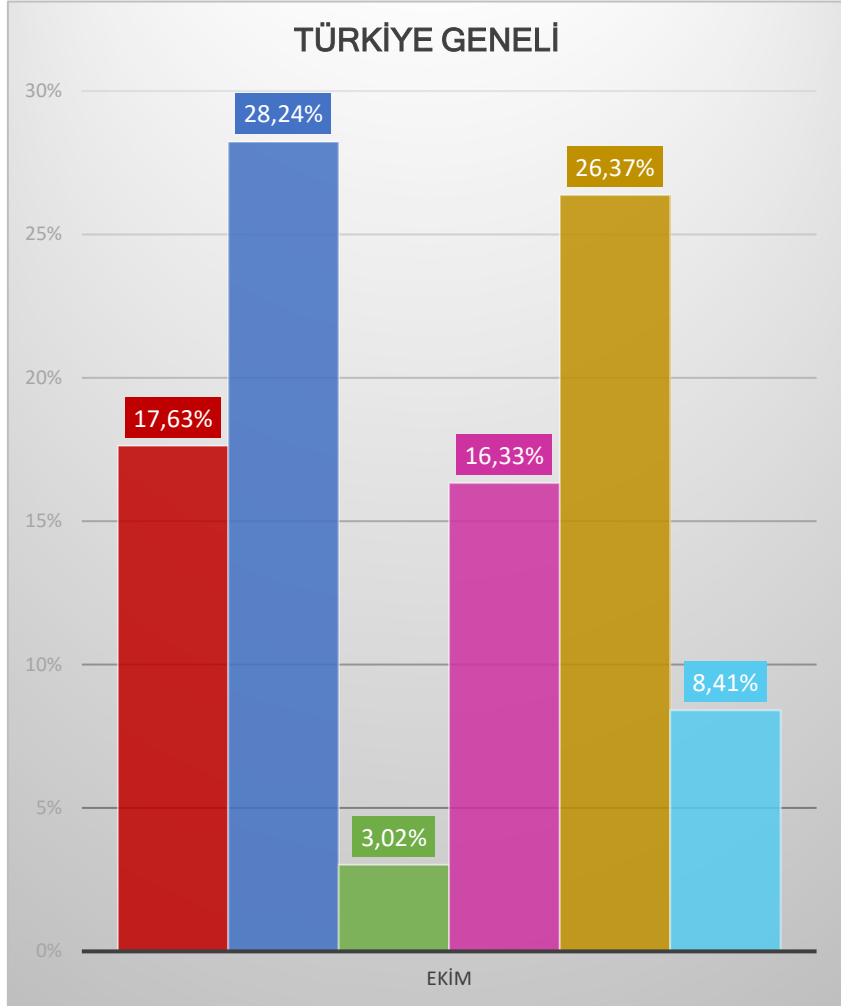
Zonayı yaş grubundan bağımsız hangi grup hastalarda daha çok görüyorsunuz?



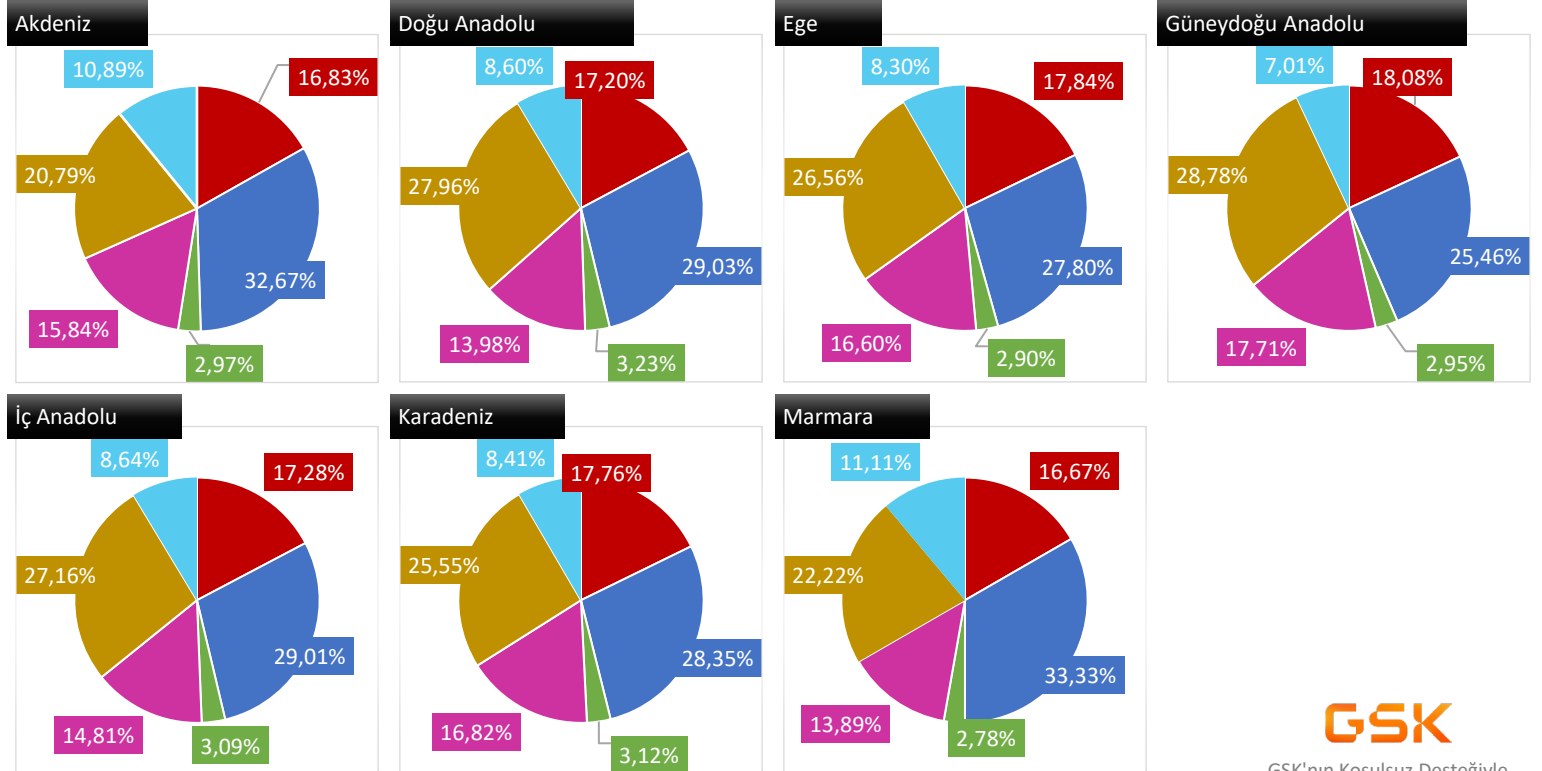
- Tip 2 Diyabet Mellitus olan hastalar
- Kanser tedavisi alan hastalar
- Kanser geçmişi olan hastalar
- Romatolojik hastalıklar
- HIV ile yaşayan bireyler
- Yakın zamanda nakil geçmişi olan hastalar
- Hematolojik malignitesi olanlar hastalar (KLL, Multiple myelom vb)



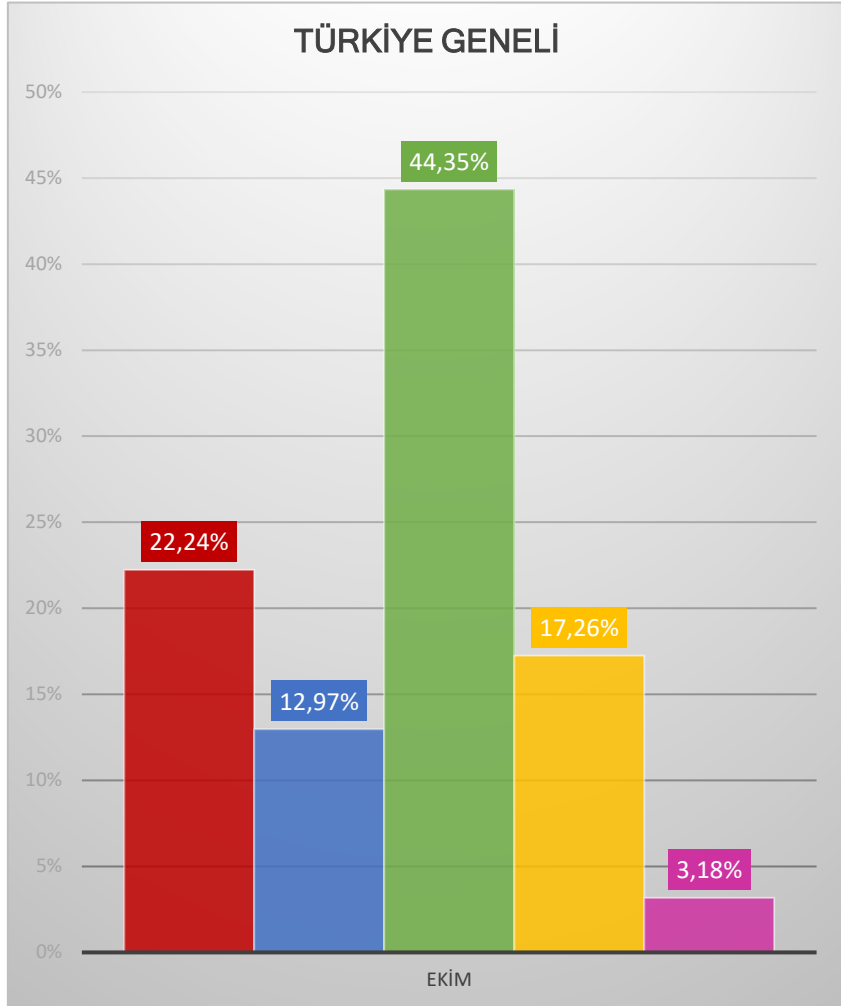
Zonayı yaş grubundan bağımsız hangi grup hastalarda daha riskli görüyorsunuz?



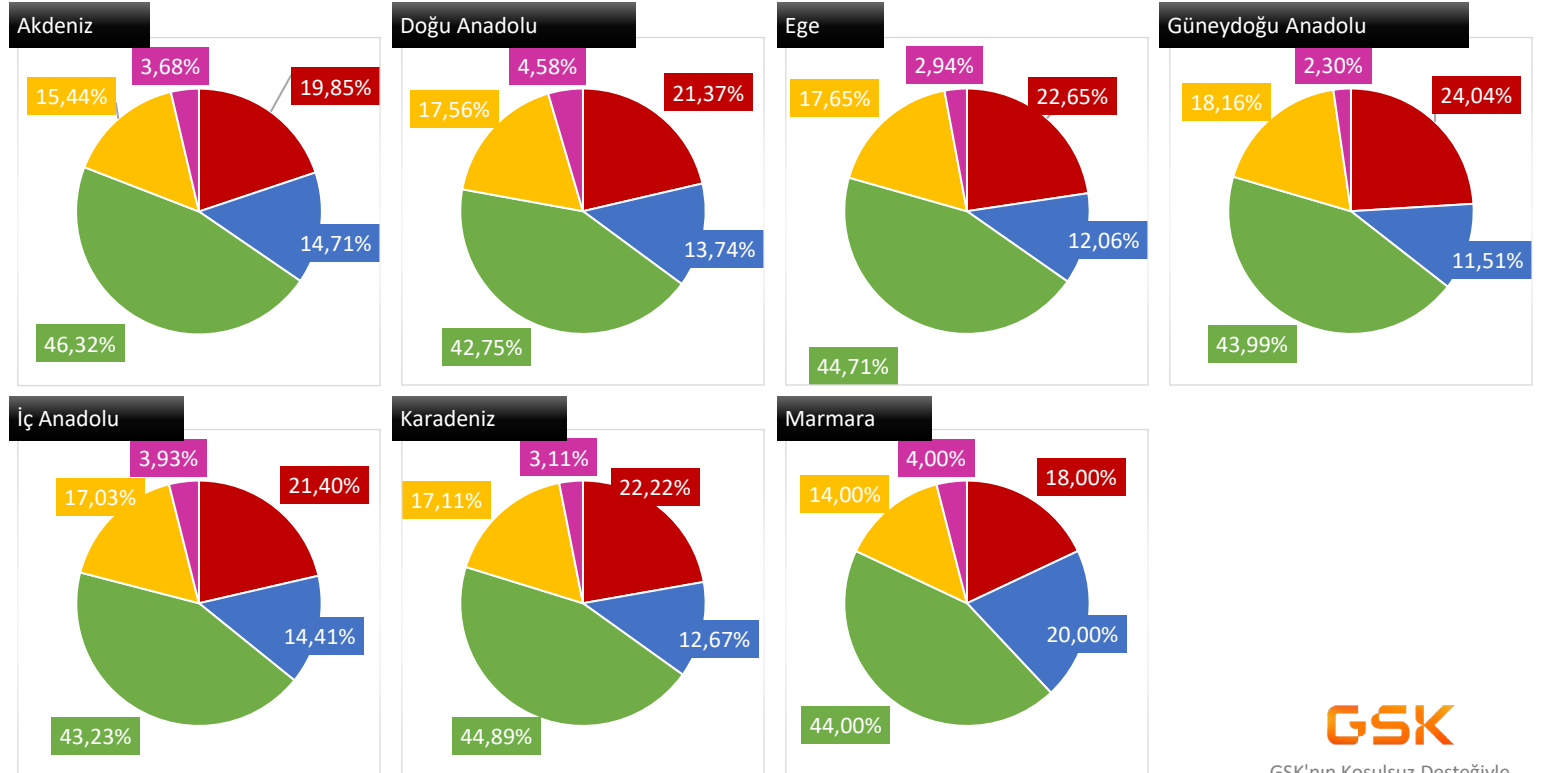
- Tip 2 Diyabet Mellitus olan hastalar
- Kanser tedavisi alan hastalar
- Kanser geçmişi olan hastalar
- Romatolojik hastalıklar
- HIV ile yaşayan bireyler
- Yakın zamanda nakil geçmişi olan hastalar
- Hematolojik malignitesi olanlar hastalar (KLL, Multiple myelom vb)



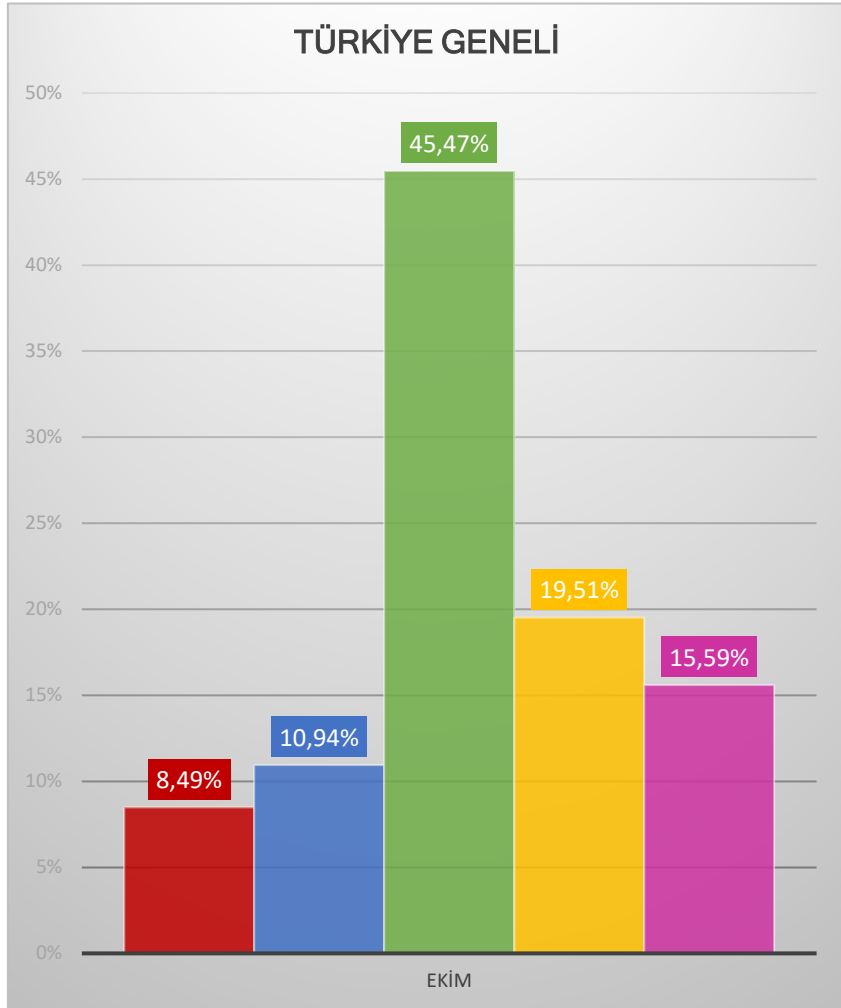
Aşağıdaki ifadelerden hangisi erişkin aşıları hakkındaki görüşlerinizi en iyi şekilde açıklar?



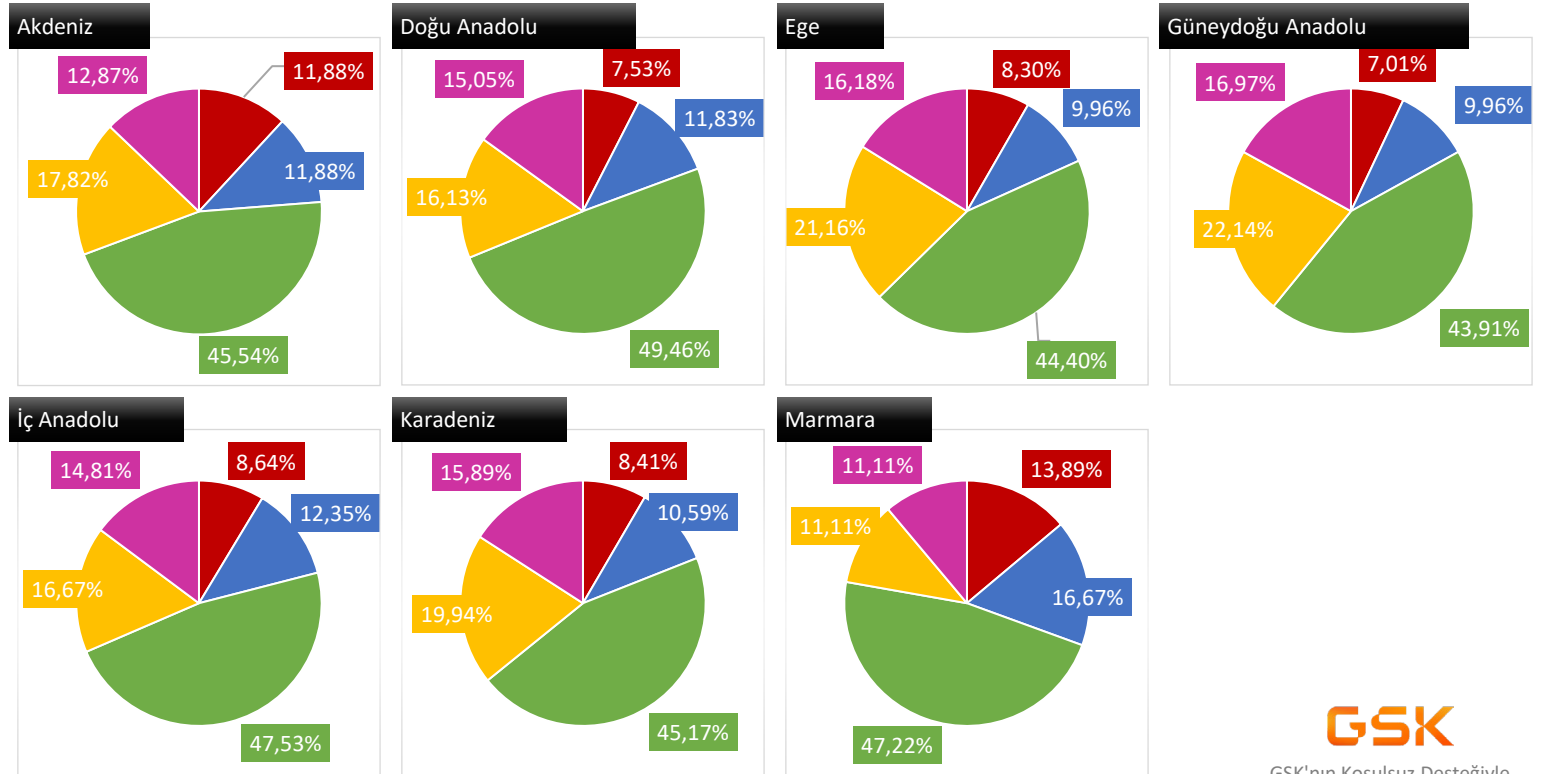
- Tüm hastalarla erişkin aşılar hakkında konuşuyorum
- 50 yaş ve üstü tüm hastalarla erişkin aşılar hakkında konuşuyorum
- Kronik rahatsızlığı / komorbiditesi olan hastalarla erişkin aşılar hakkında konuşuyorum
- Bağışıklığı baskılanmış hastalarla erişkin aşılar hakkında konuşuyorum
- Hastalarım ile erişkin aşılar hakkında konuşmuyorum



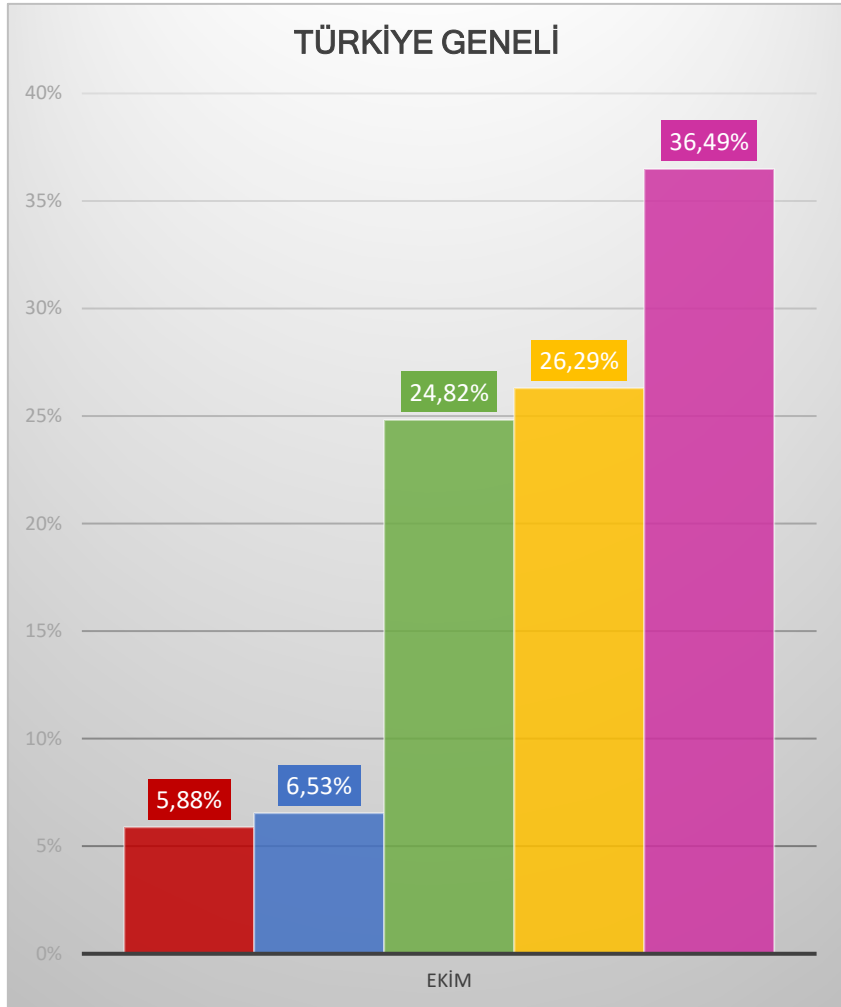
Aşılanmamış hastalarınızın zona'ya yakalanma riskini 1 ile 5 arasında puanlar mısınız?



- 1
- 2
- 3
- 4
- 5

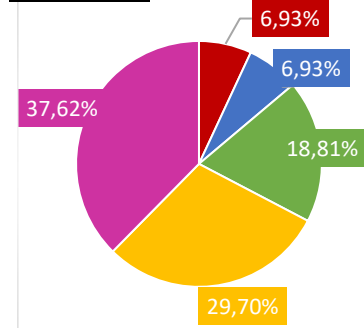


Ürün reçetelerken ürünün orijinalliği sizin için ne kadar önemli? 1 ile 5 arasında puanlar mısınız?

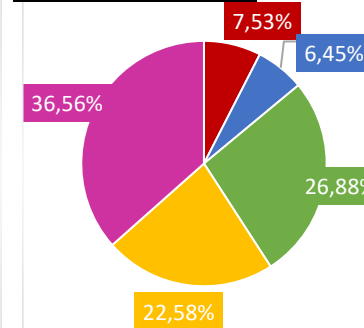


- 1
- 2
- 3
- 4
- 5

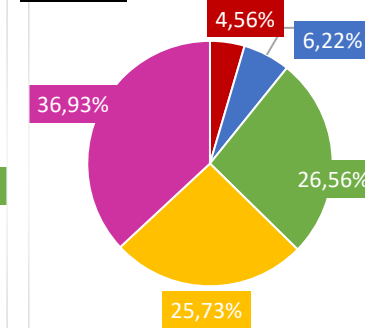
Akdeniz



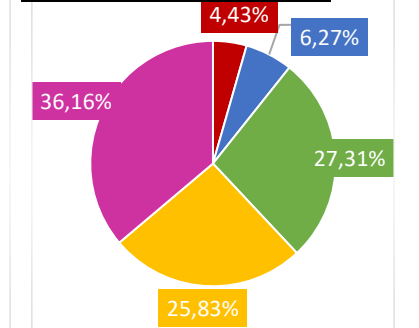
Doğu Anadolu



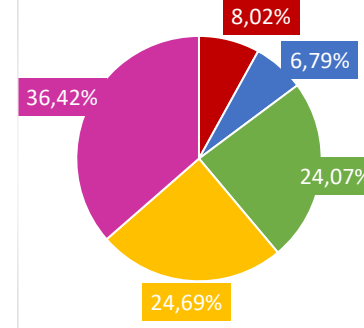
Ege



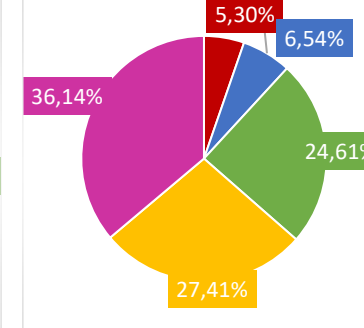
Güneydoğu Anadolu



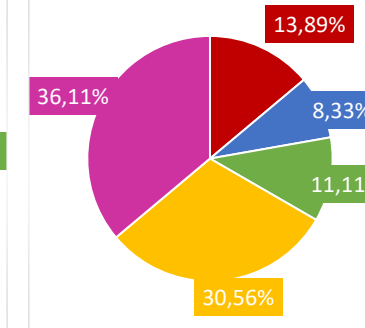
İç Anadolu



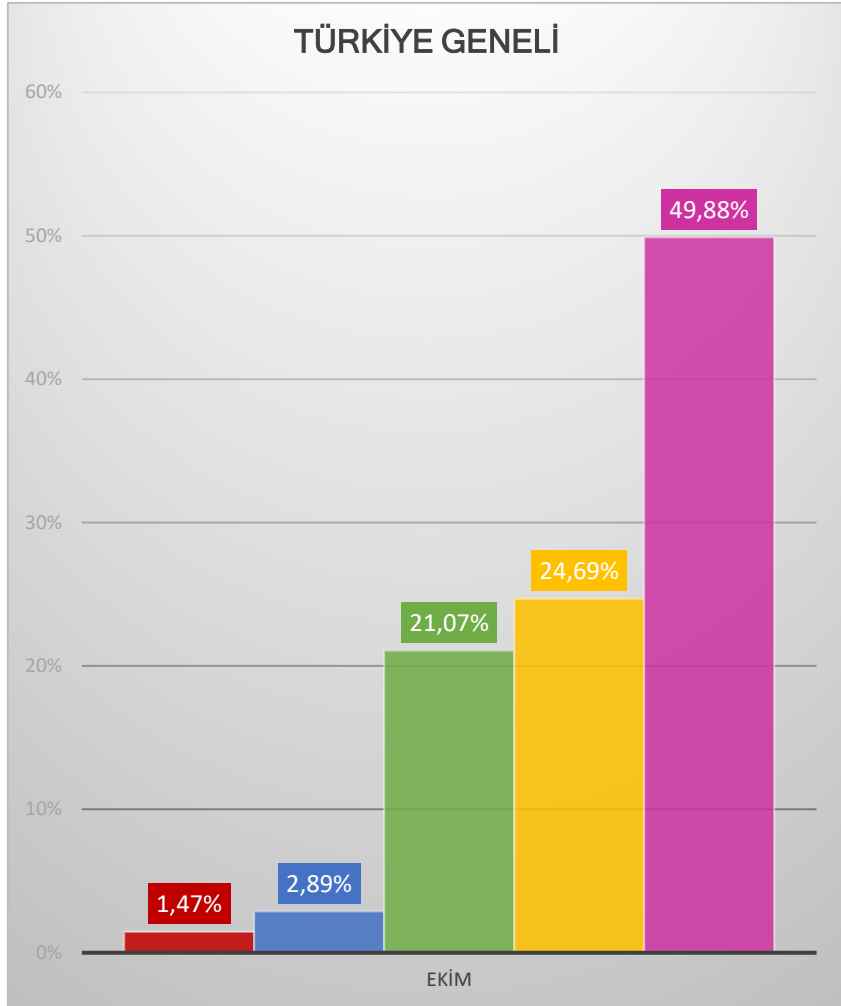
Karadeniz



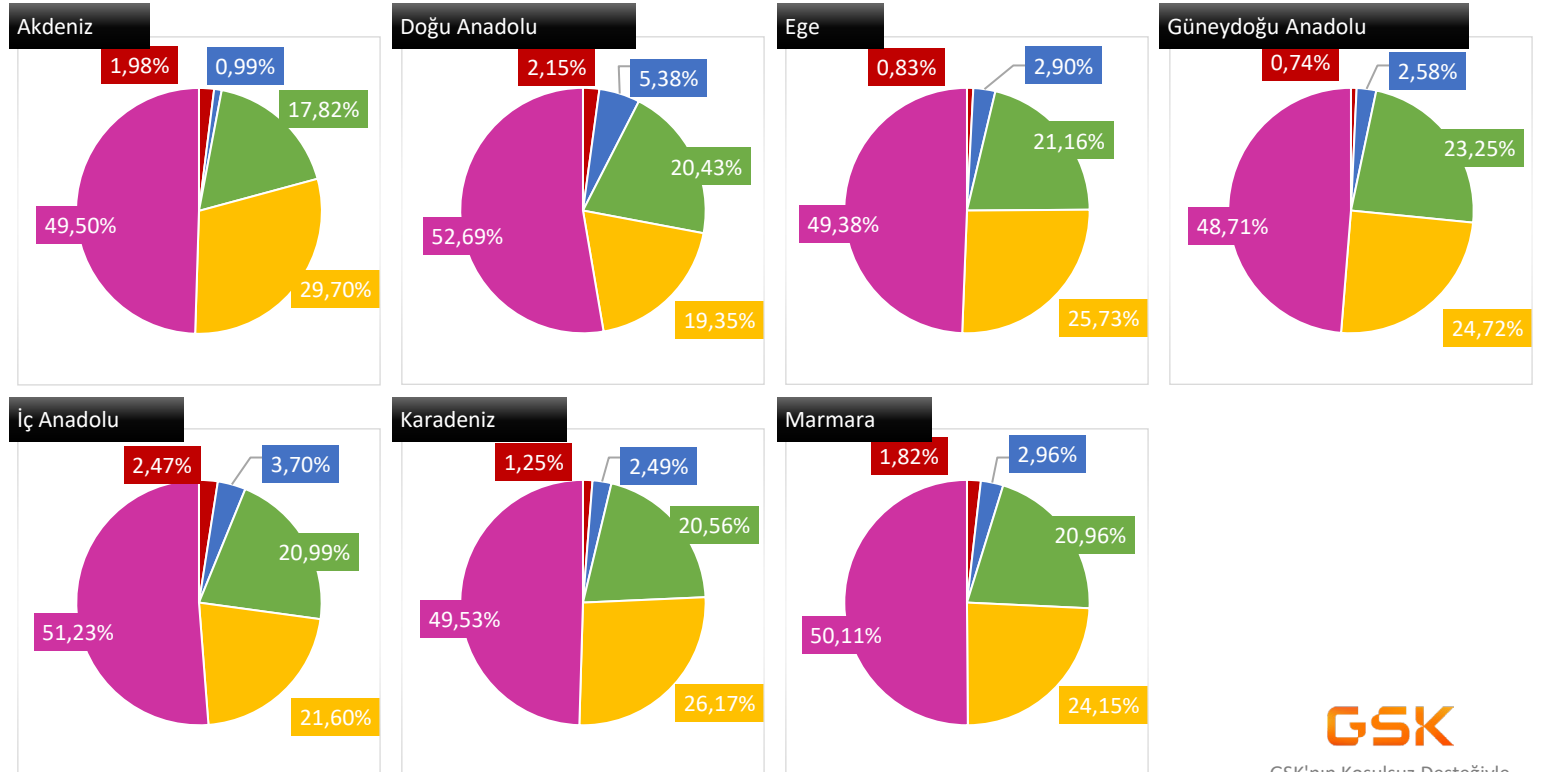
Marmara



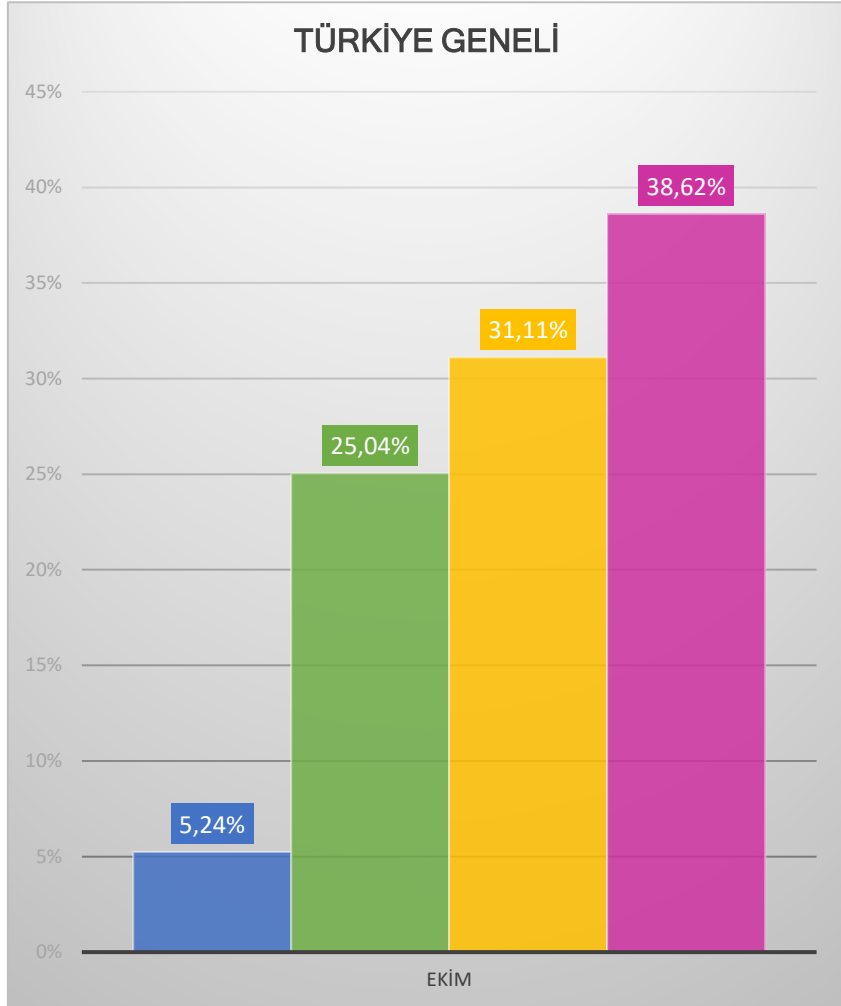
Ürünün uzun yıllardır piyasada bulunması (örneğin 30 yıl) o ürüne güveninizi arttırır mı? (1 Hiç arttırmaz - 5 Çok arttırır)



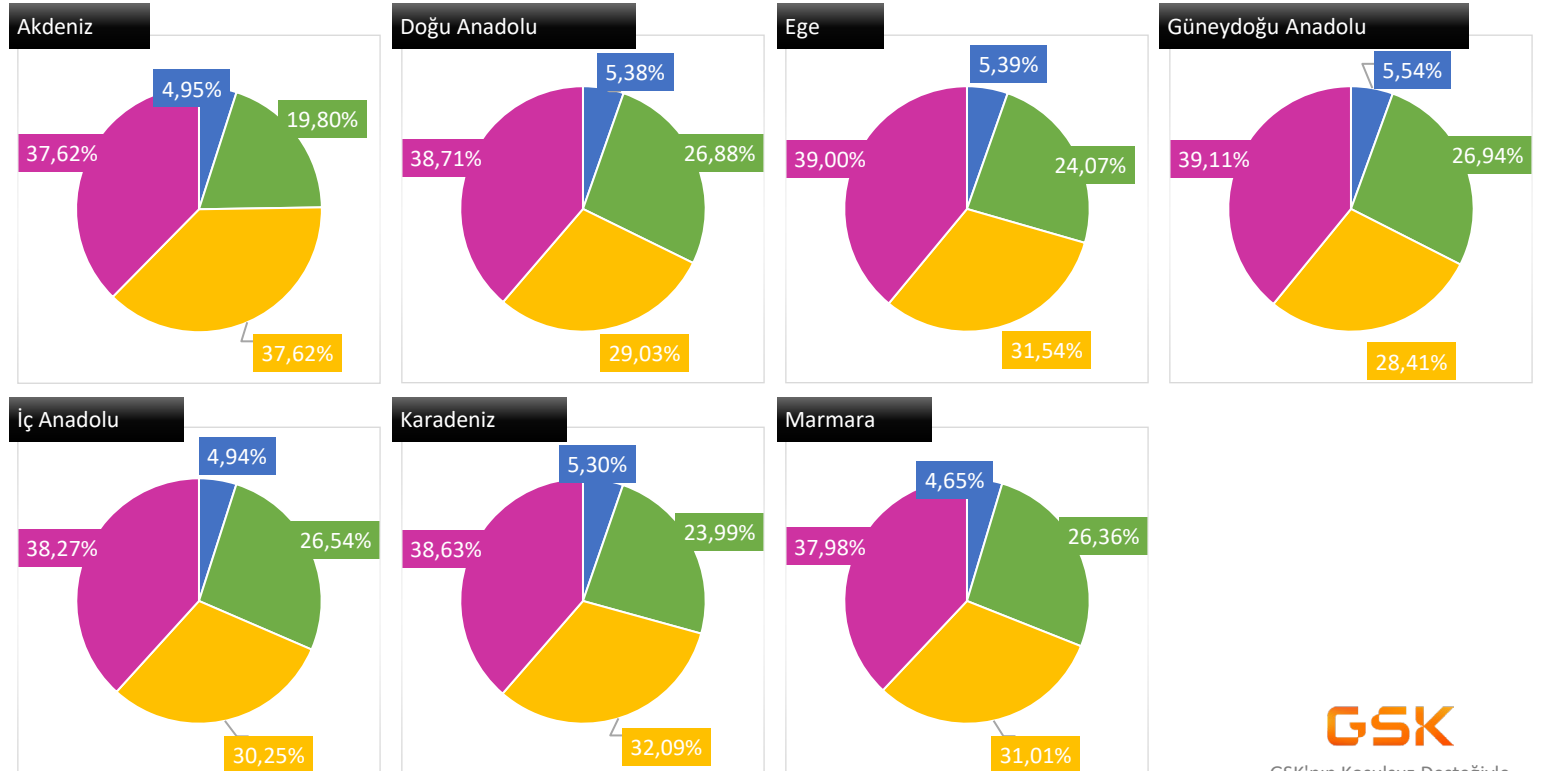
- 1
- 2
- 3
- 4
- 5



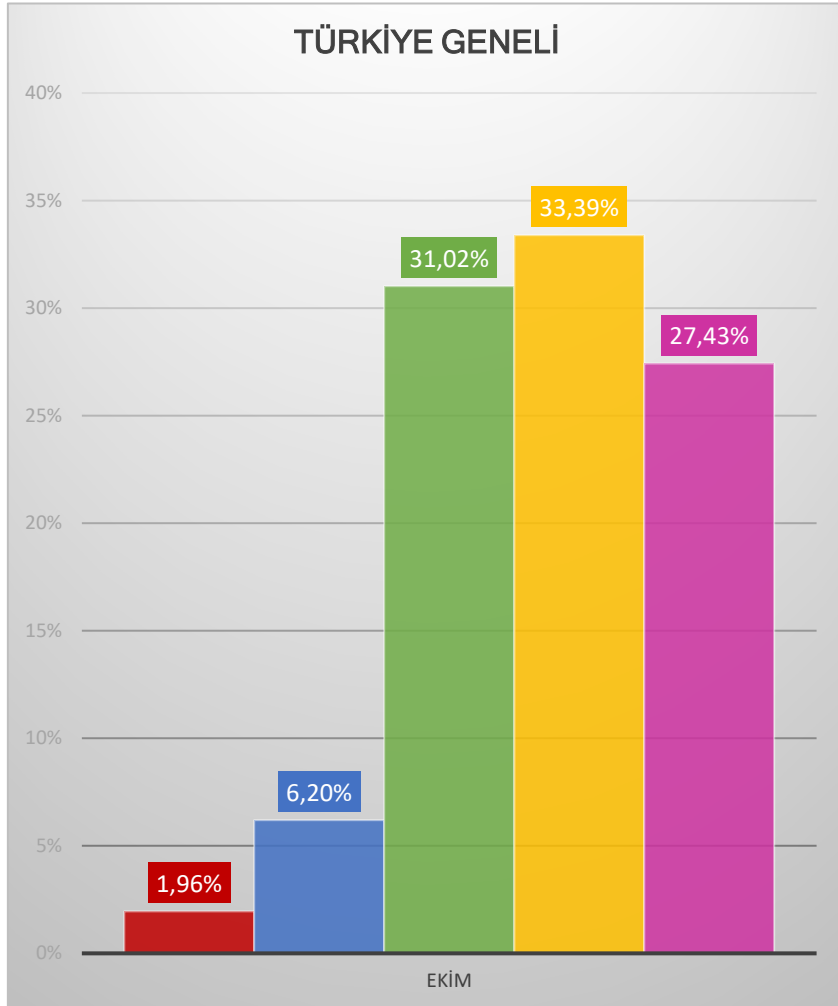
Vaka Analizi ve Uzman Hekim görüşü videolarının ideal süresi ne olmalıdır?



- 4 dk
- 15+ dk
- 3-6dk
- 6-10dk
- 10-15dk

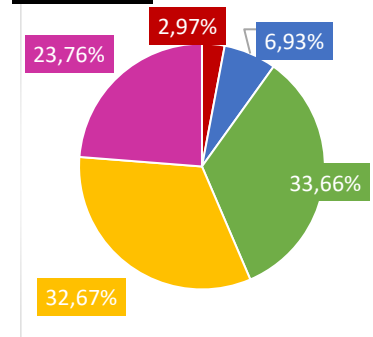


Atopik Dermatit tanısını doğru bir şekilde koyma konusunda kendimi yeterli hissediyorum (1 yeterli hissetmiyorum , 5 yeterli hissediyorum)

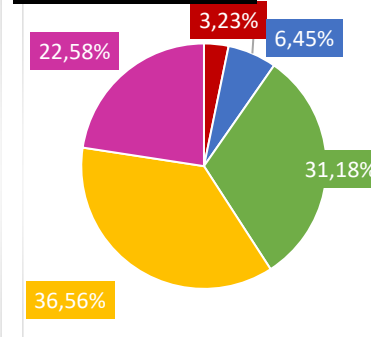


- 1
- 2
- 3
- 4
- 5

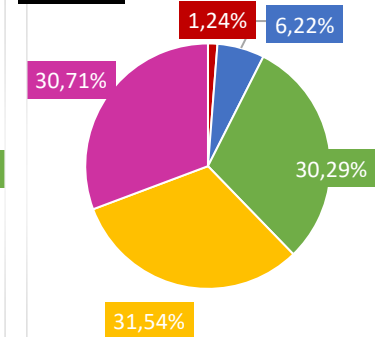
Akdeniz



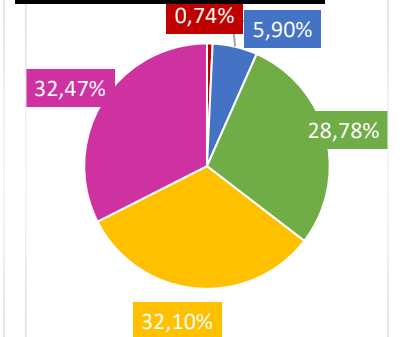
Doğu Anadolu



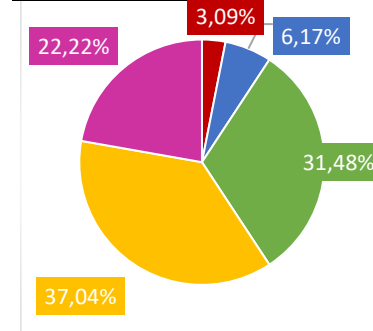
Ege



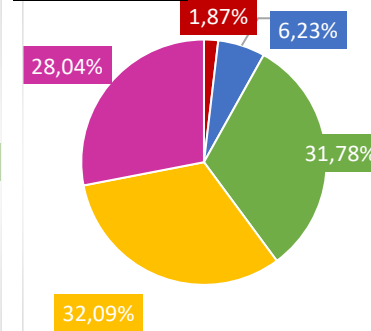
Güneydoğu Anadolu



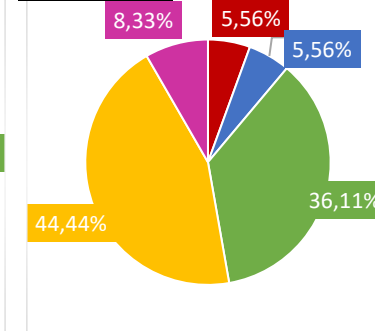
İç Anadolu



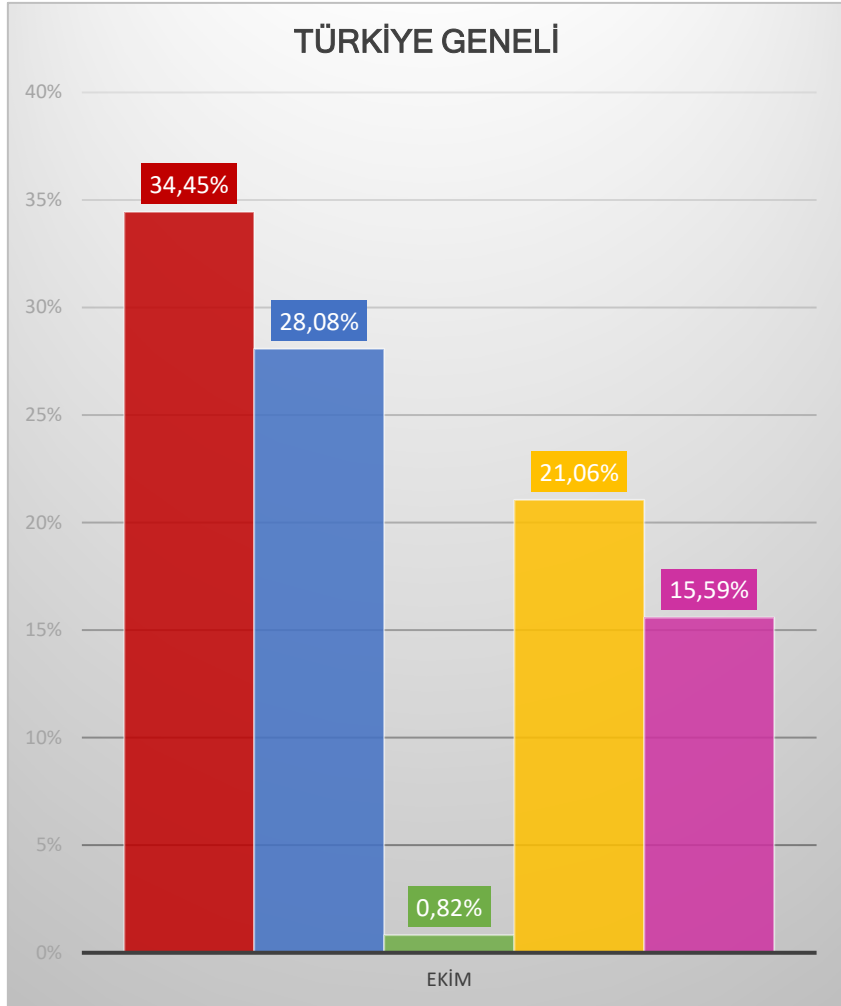
Karadeniz



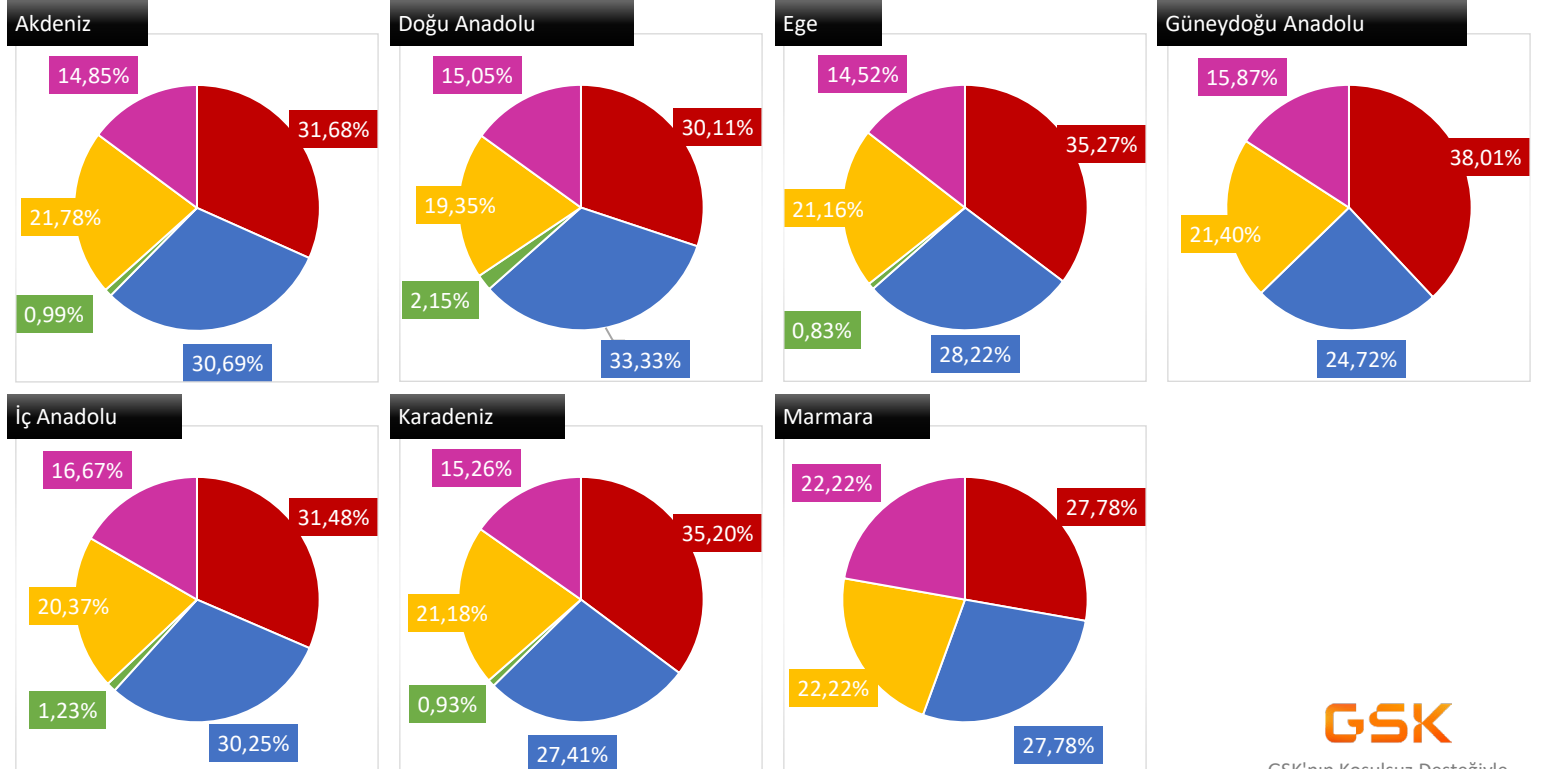
Marmara



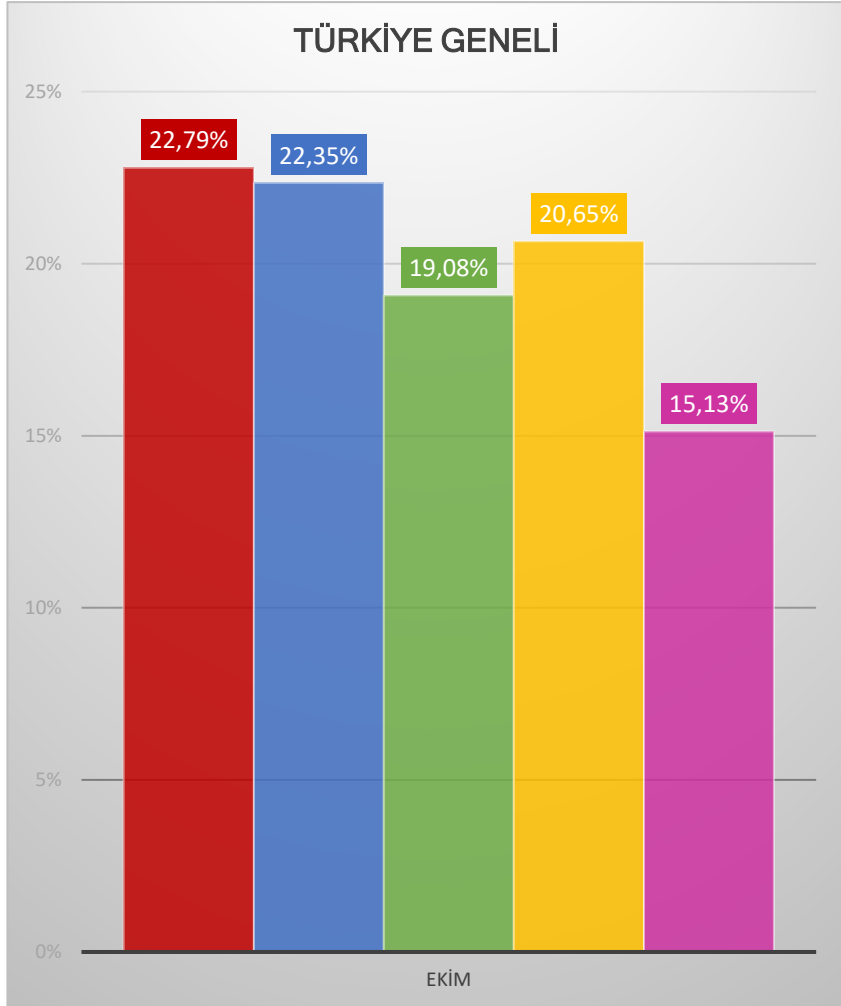
Bir ilacı tercih etme konusunda en çok hangisini önceliklendirirsiniz?



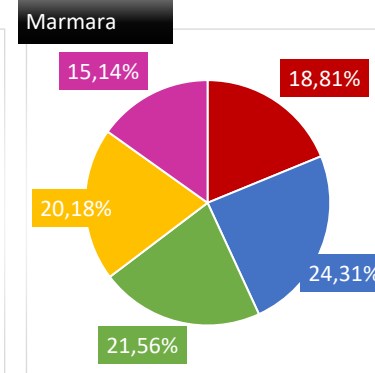
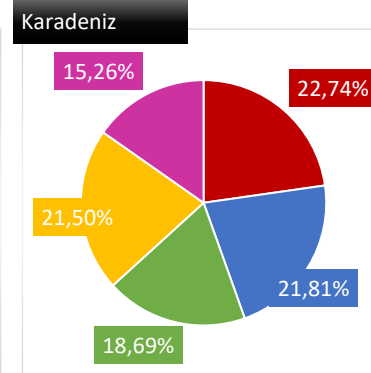
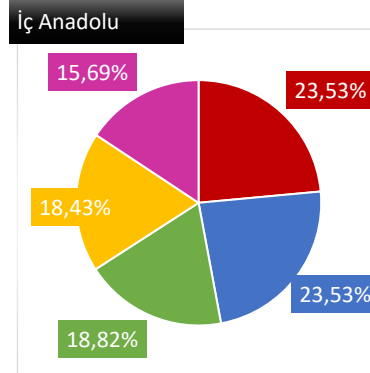
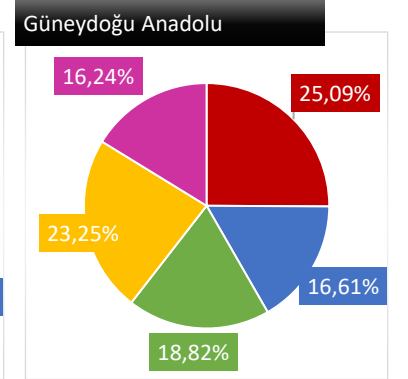
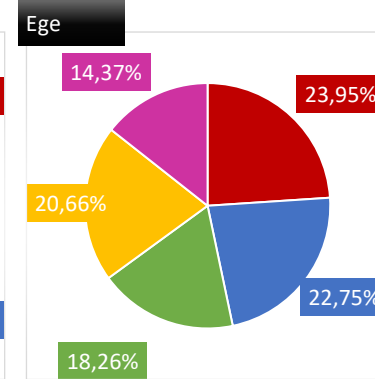
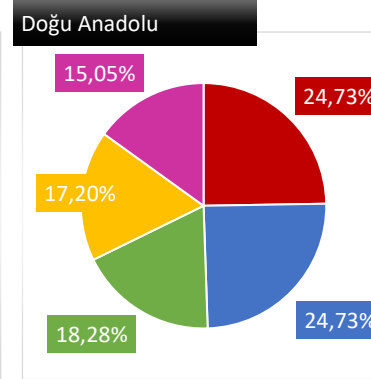
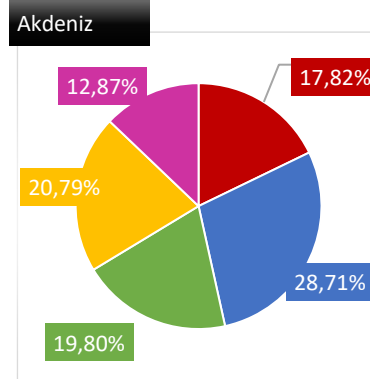
- Güvenlik
- Etkililik
- Hızlı etki
- Kullanım kolaylığı / Hasta uyumu
- İlacın geri ödeme durumu



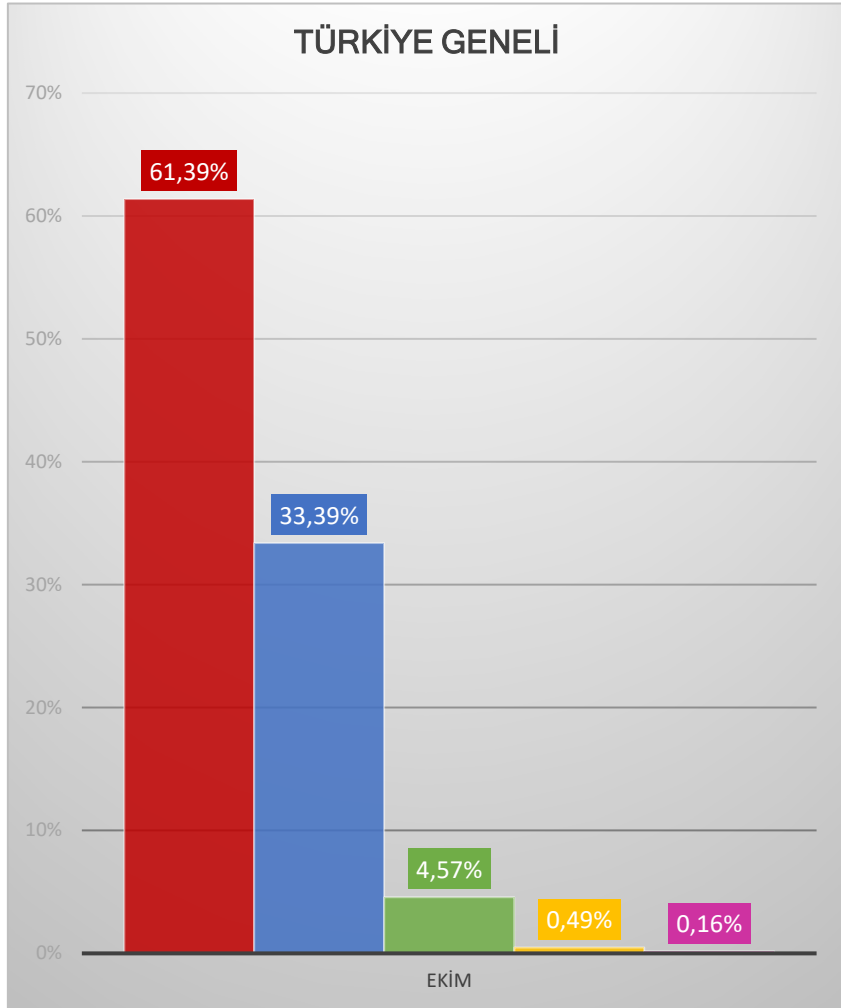
Sizi ziyaret eden ailelerin yüzde kaçına meningokok aşılarını öneriyor ve onları bu aşılarla ilgili bilgilendiriyorsunuz?



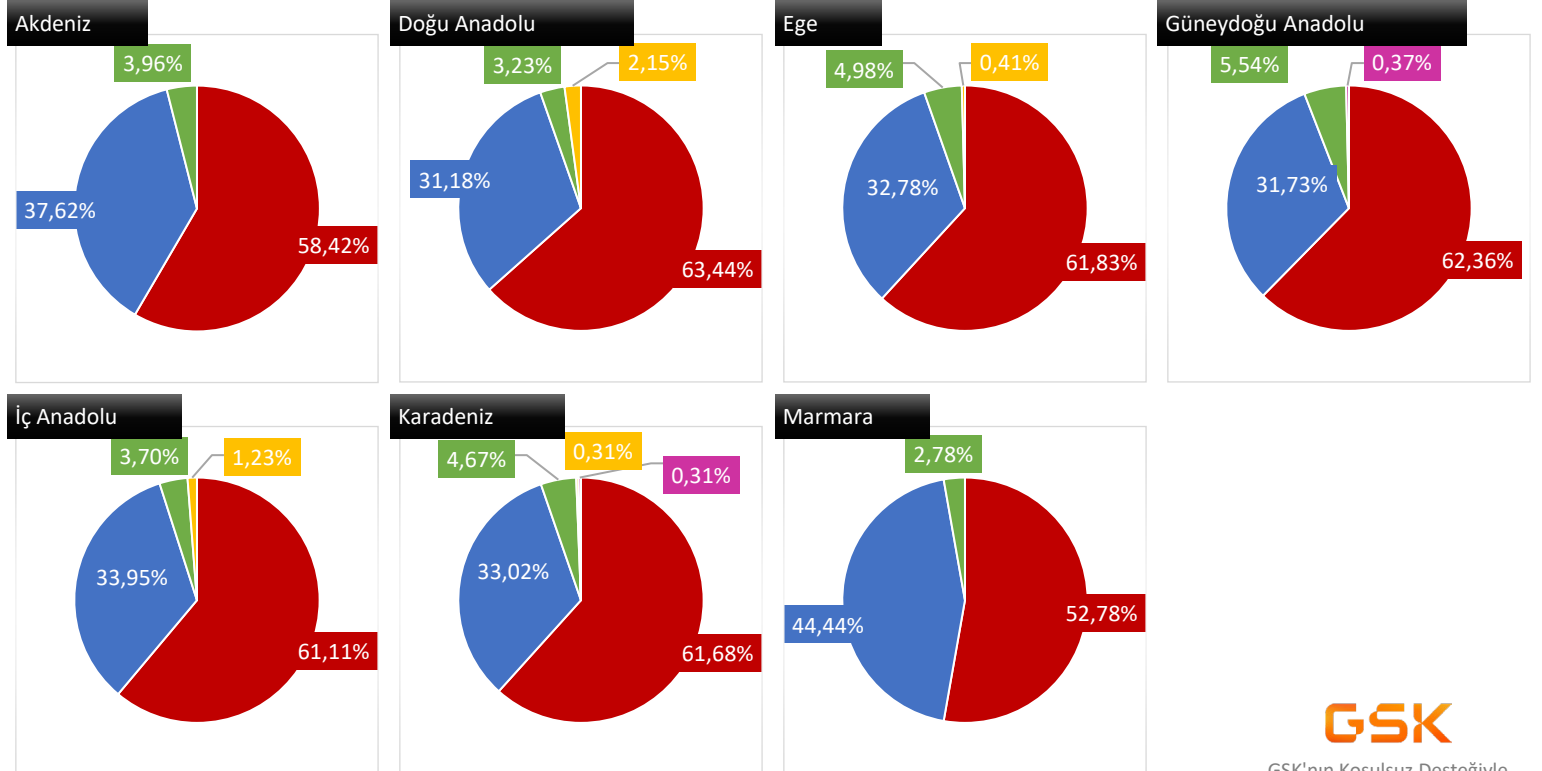
- 0%
- 25%
- 50%
- 75%
- 100%



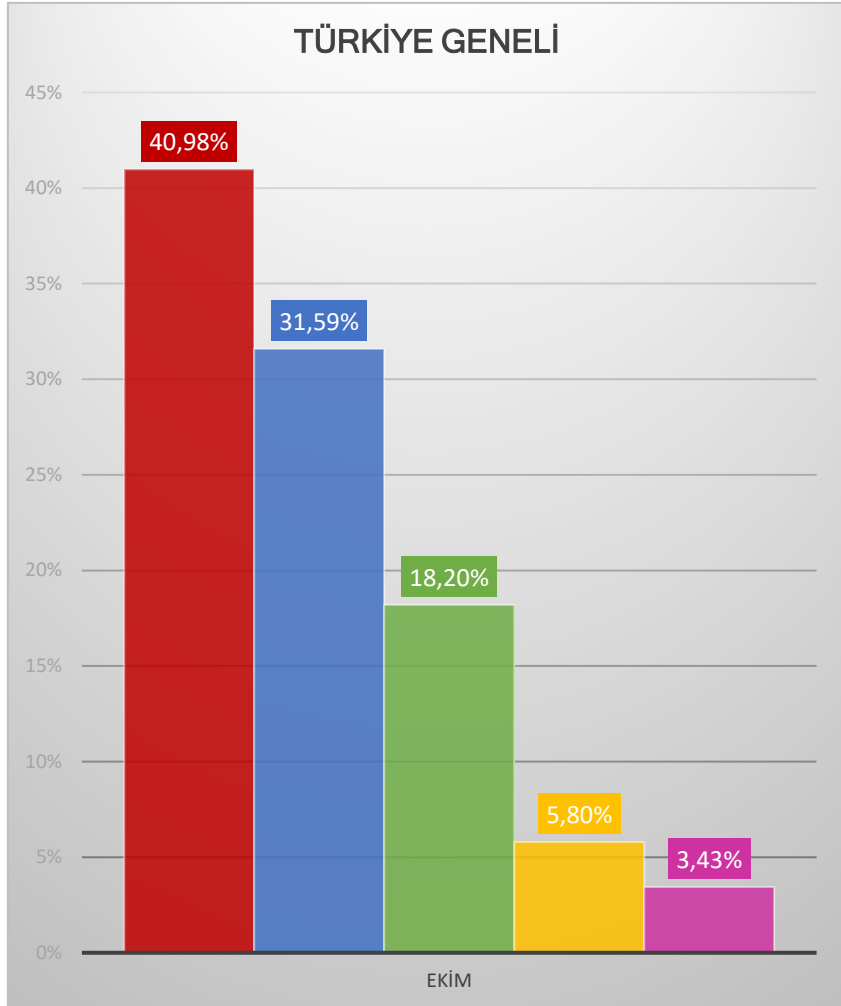
Sizi ziyaret eden adölesanların (10-19 yaş) ve/veya adölesan ebeveynlerinin yüzde kaç proaktif bir şekilde size meningokok aşılımaları ile ilgili sorular soruyor?



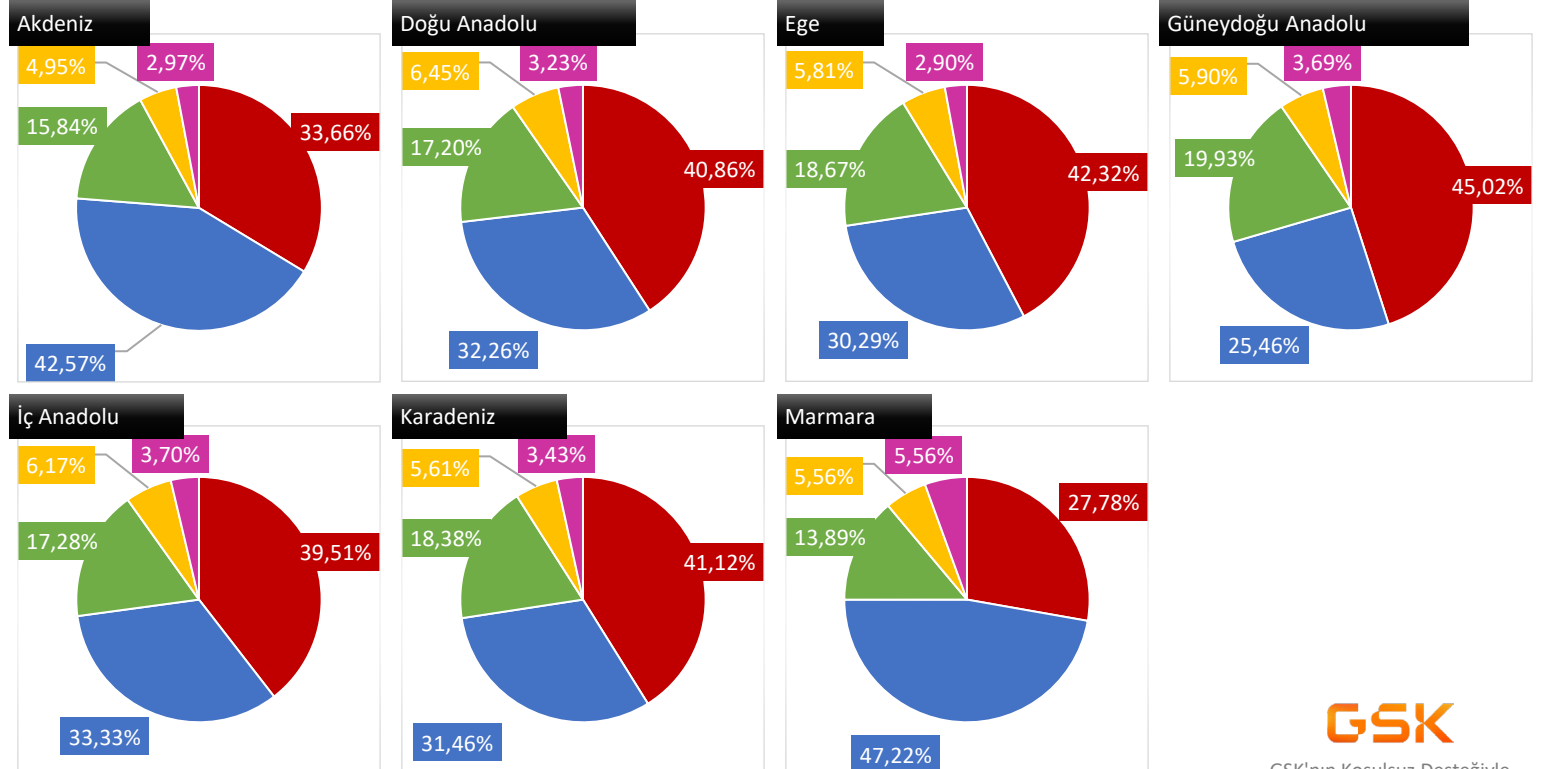
- 0%
- 25%
- 50%
- 75%
- 100%



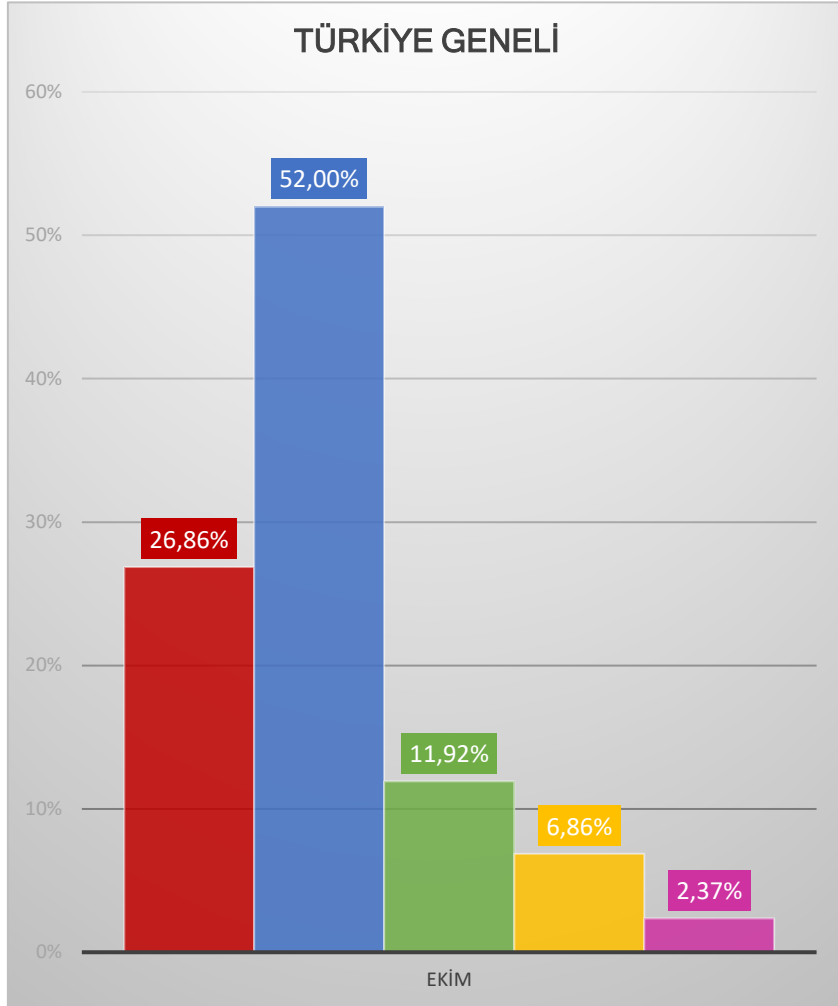
Sizi ziyaret eden adölesanlara (10-19 yaş) ve/veya adölesan ebeveynlerine proaktif bir şekilde meningokok aşılması hakkında bilgi veriyor musunuz?



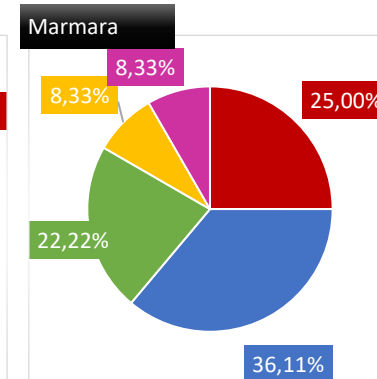
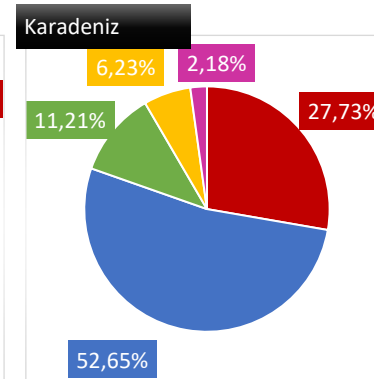
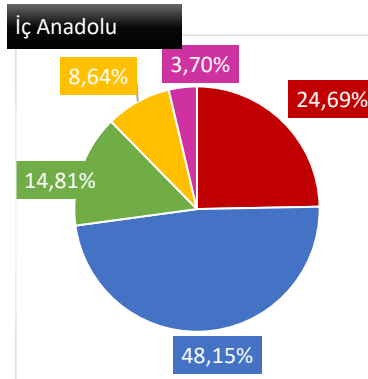
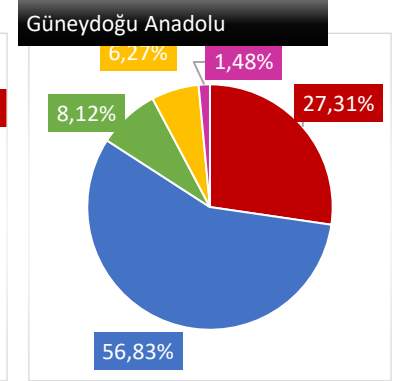
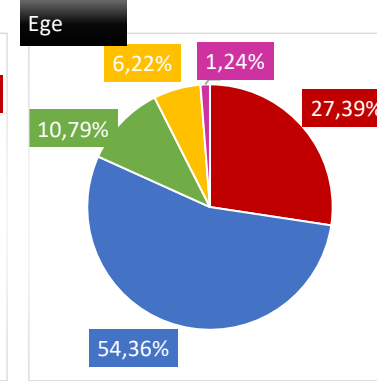
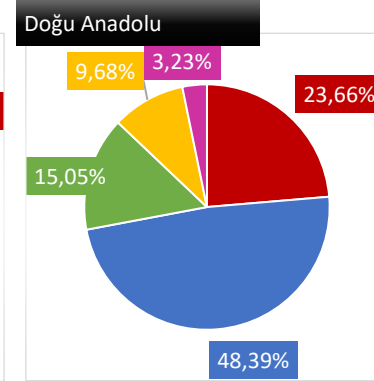
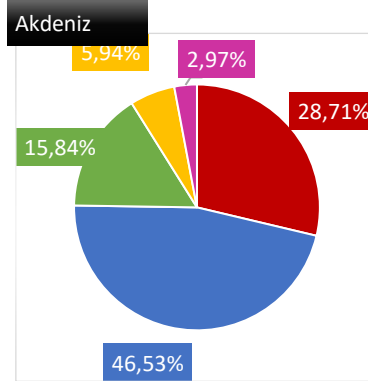
- 0%
- 25%
- 50%
- 75%
- 100%



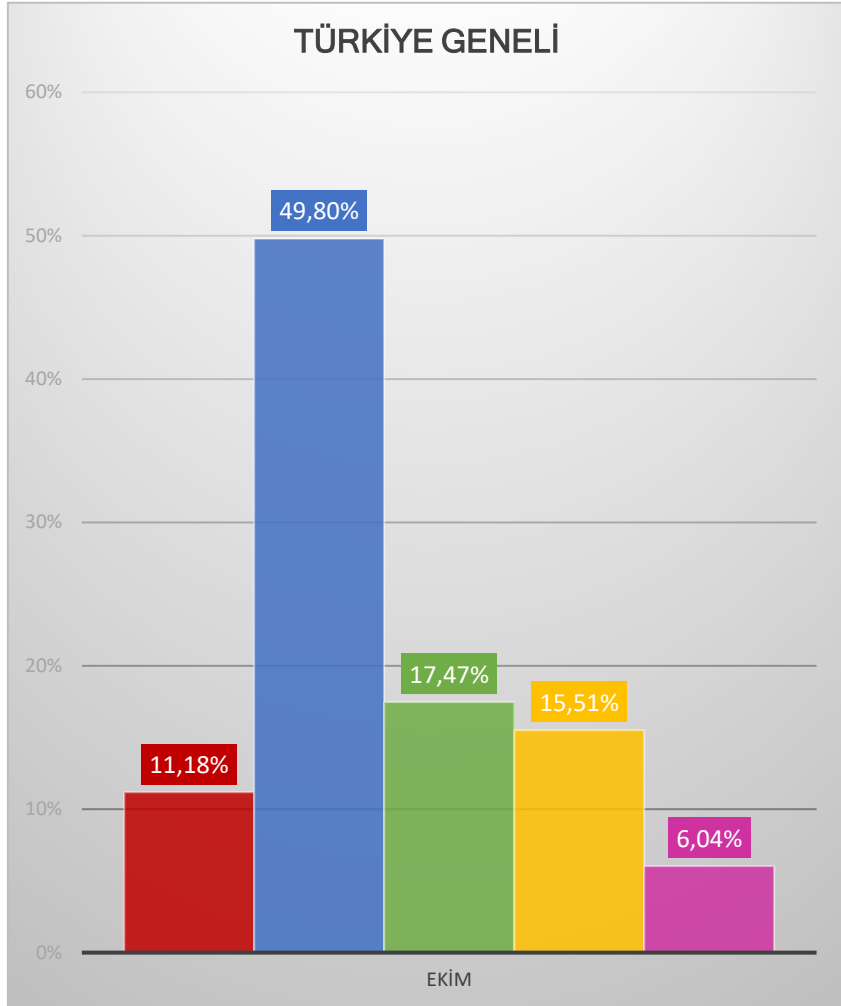
0-2 yaş bebeği olan anne ve hamile hastalarınızdan kaç proaktif bir şekilde size menenjit ve menenjit aşısı ile ilgili soru sorarak bir konuşma başlattı?



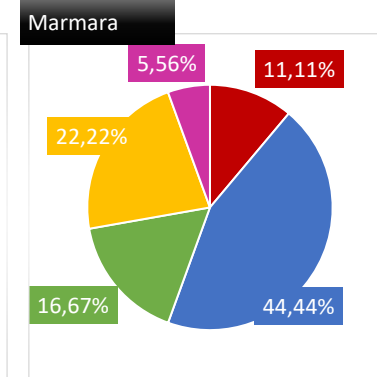
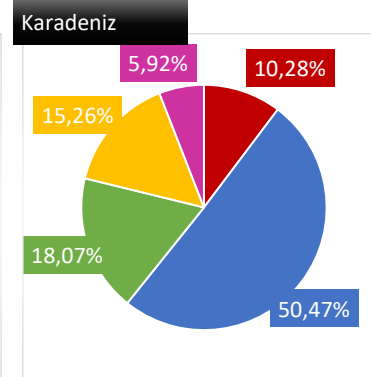
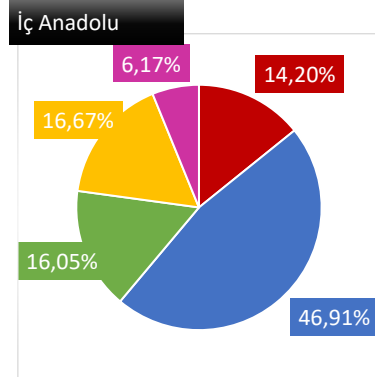
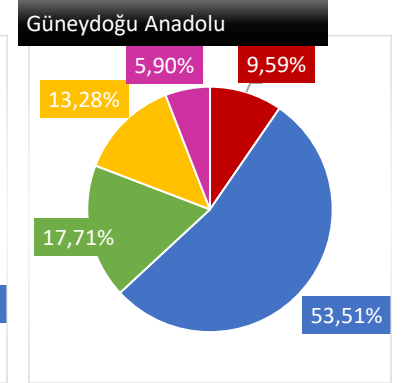
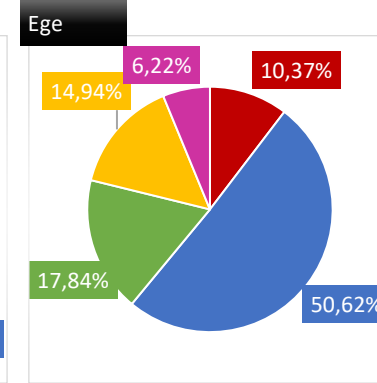
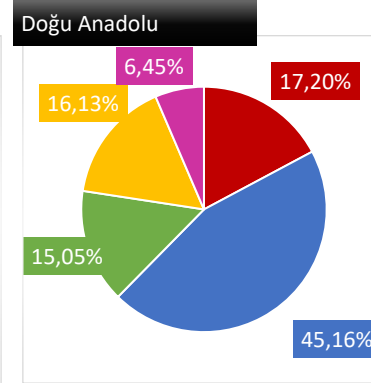
- 0%
- 25%
- 50%
- 75%
- 100%



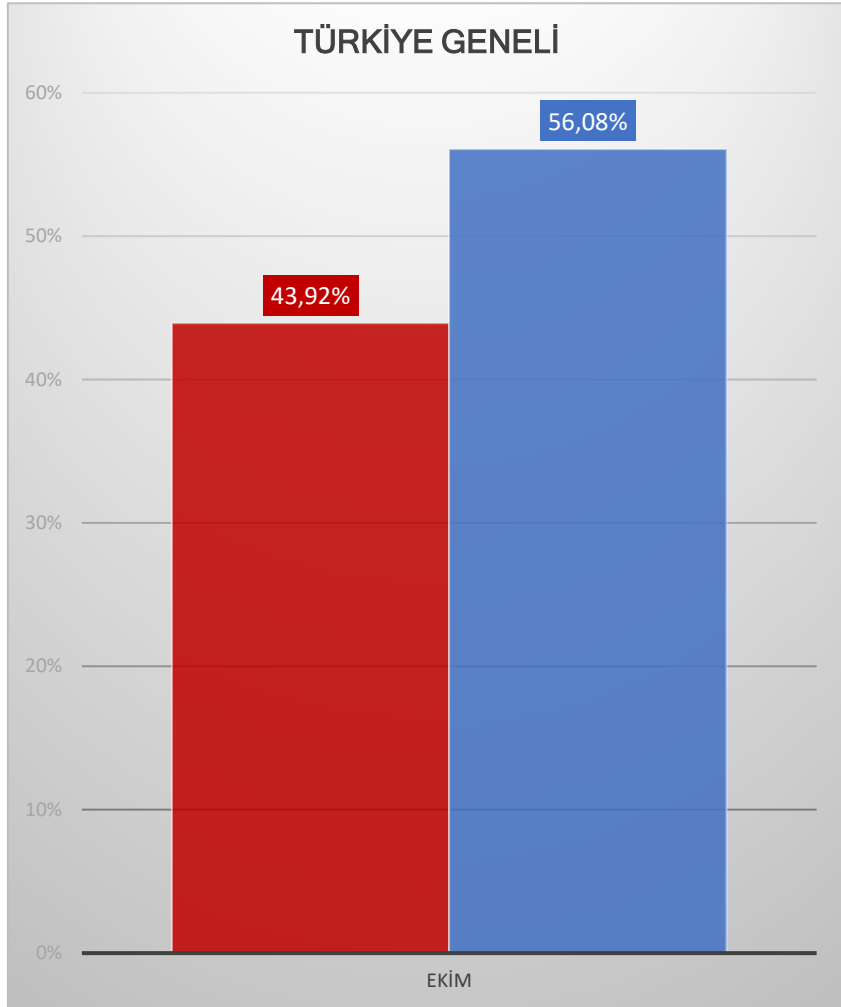
Aile hekimliği merkezimize gelen bebeklerin ne kadarına rotavirüs aşısı uygulanmaktadır?



- 0%
- 25%
- 50%
- 75%
- 100%

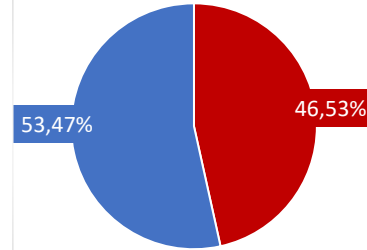


AHEF olarak menenjit farkındalığı arttırmak için başlattığımız BitinSenMenenjit kampanyamızı duyduunuz mu?

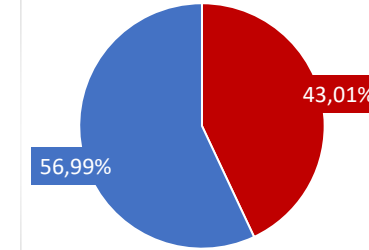


■ Evet
■ Hayır

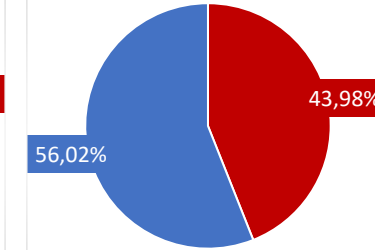
Akdeniz



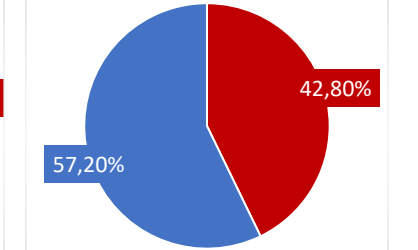
Doğu Anadolu



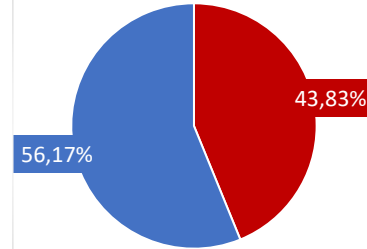
Ege



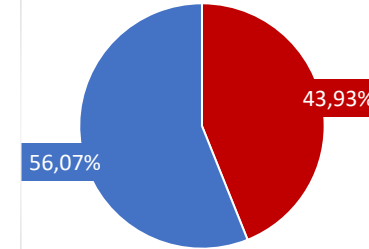
Güneydoğu Anadolu



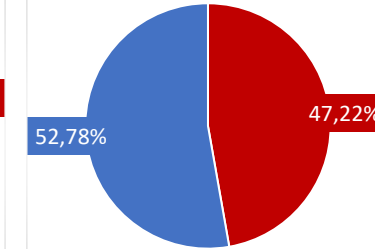
İç Anadolu



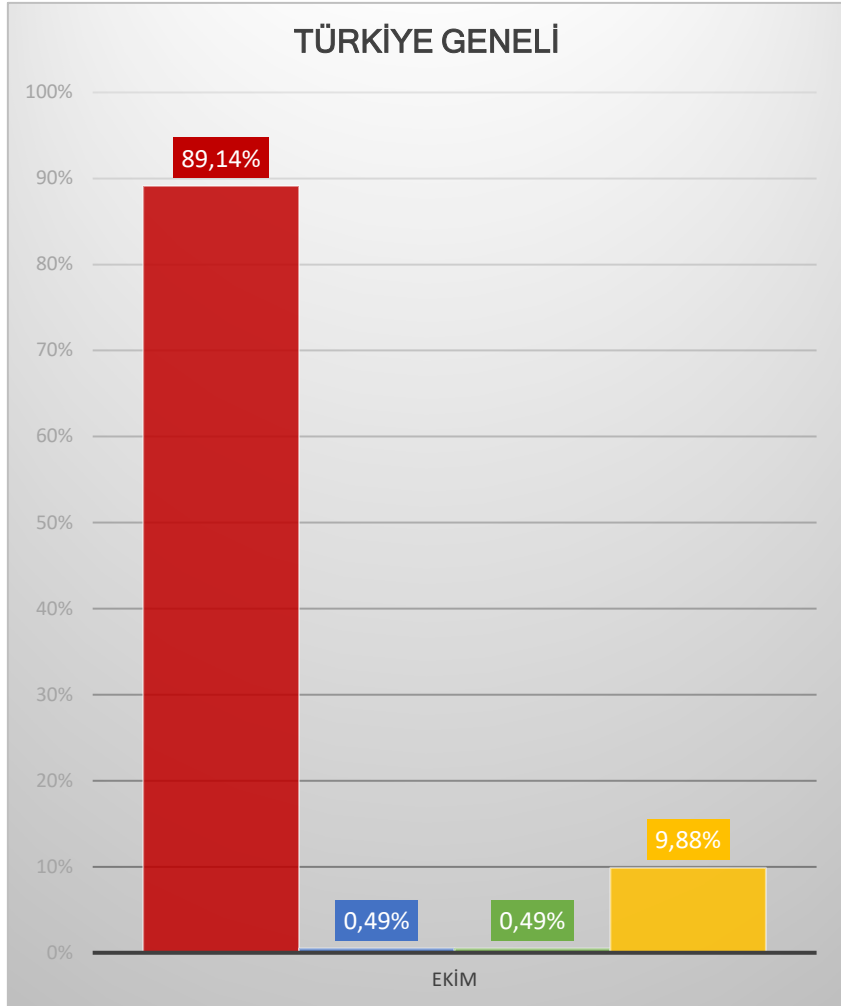
Karadeniz



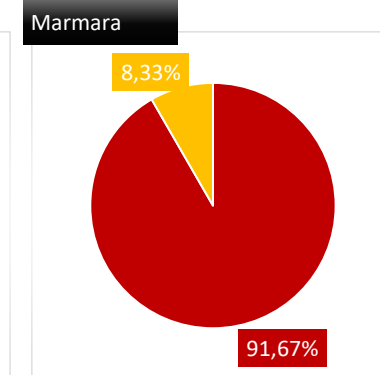
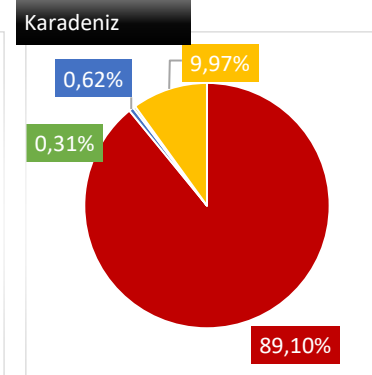
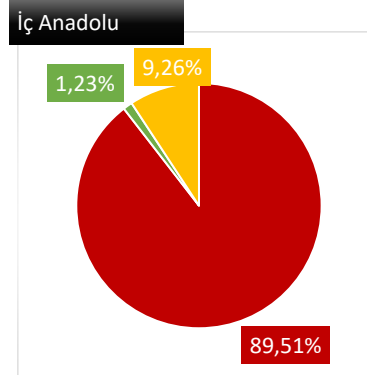
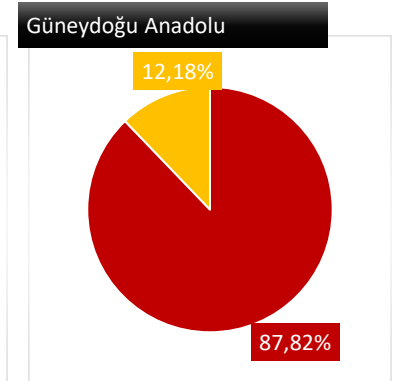
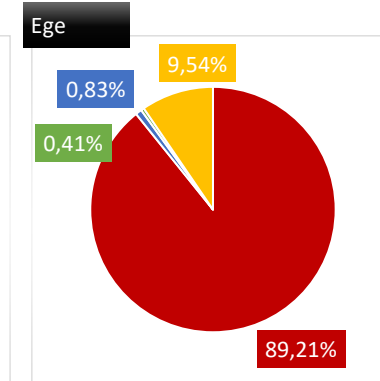
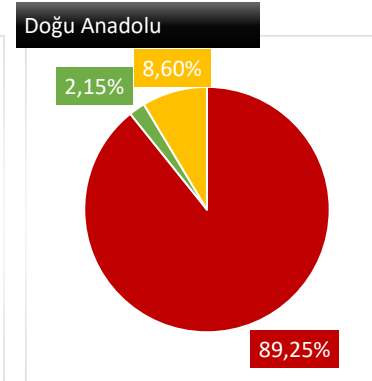
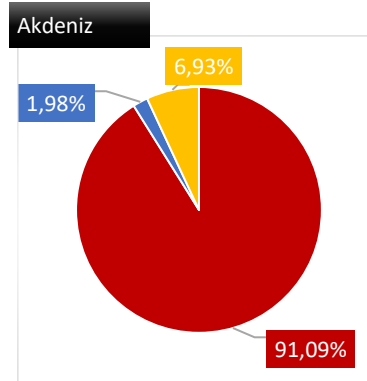
Marmara



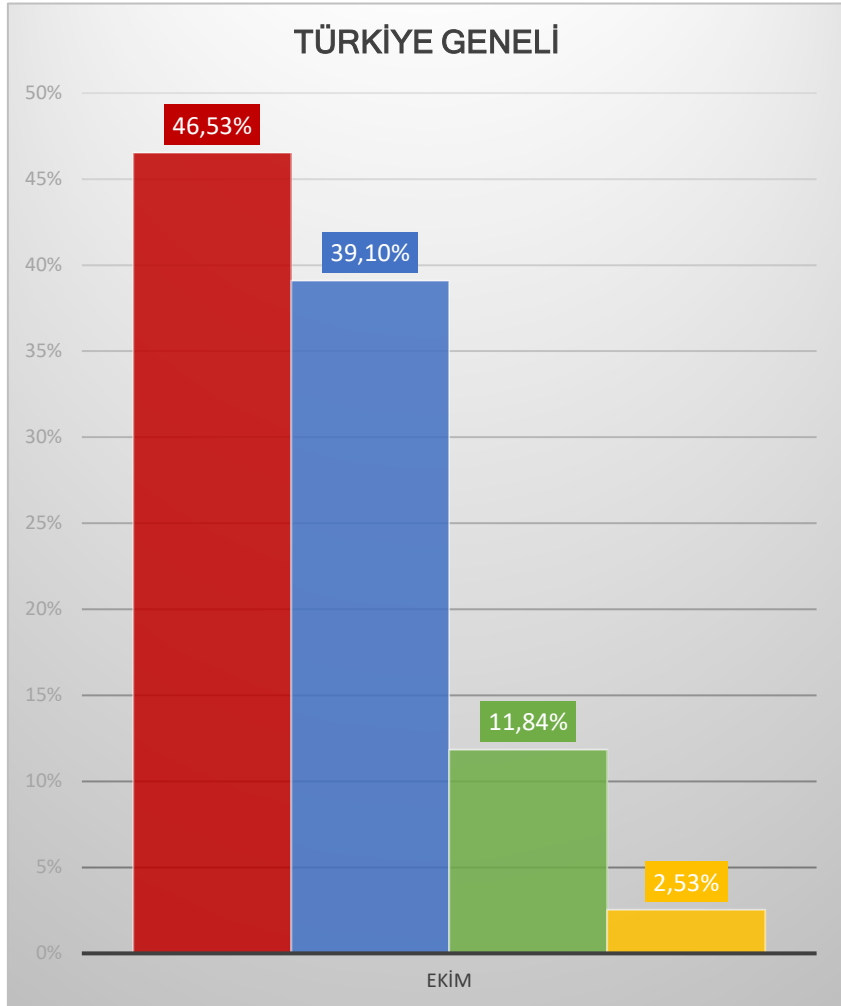
Son iki haftayı değerlendirdiğinizde polikliniğinize başvuran hastalarda enfeksiyon (solunum yolu enfeksiyonları, GIS enfeksiyonları vb.) görülme sıklığında artış gözlemliyor musunuz?



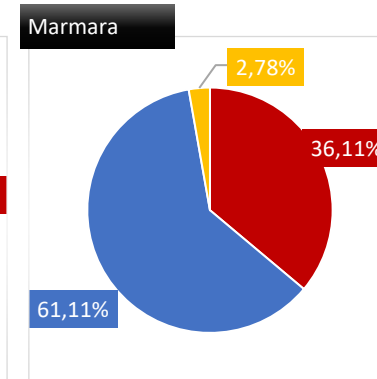
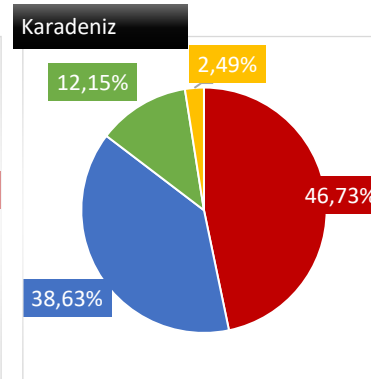
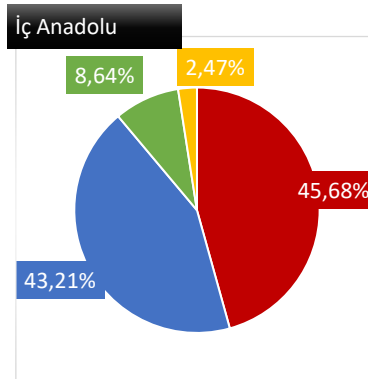
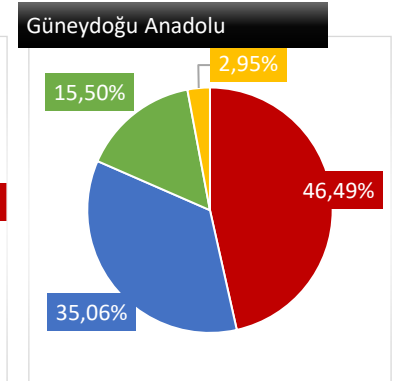
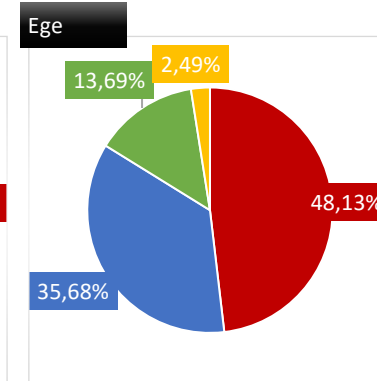
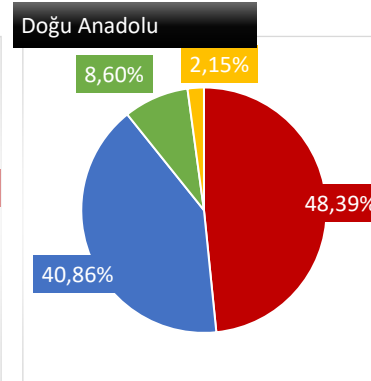
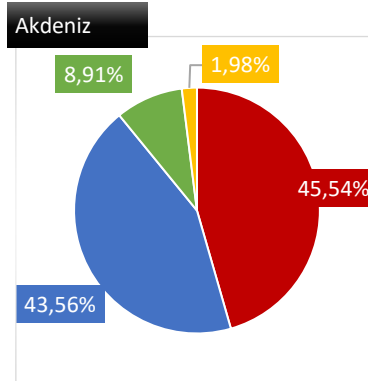
- Evet, gözlemliyorum (yetişkin ve çocuklarda)
- Evet, gözlemliyorum (Sadece çocuklarda)
- Evet, gözlemliyorum (Sadece yetişkinlerde)
- Hayır, gözlemlemiyorum



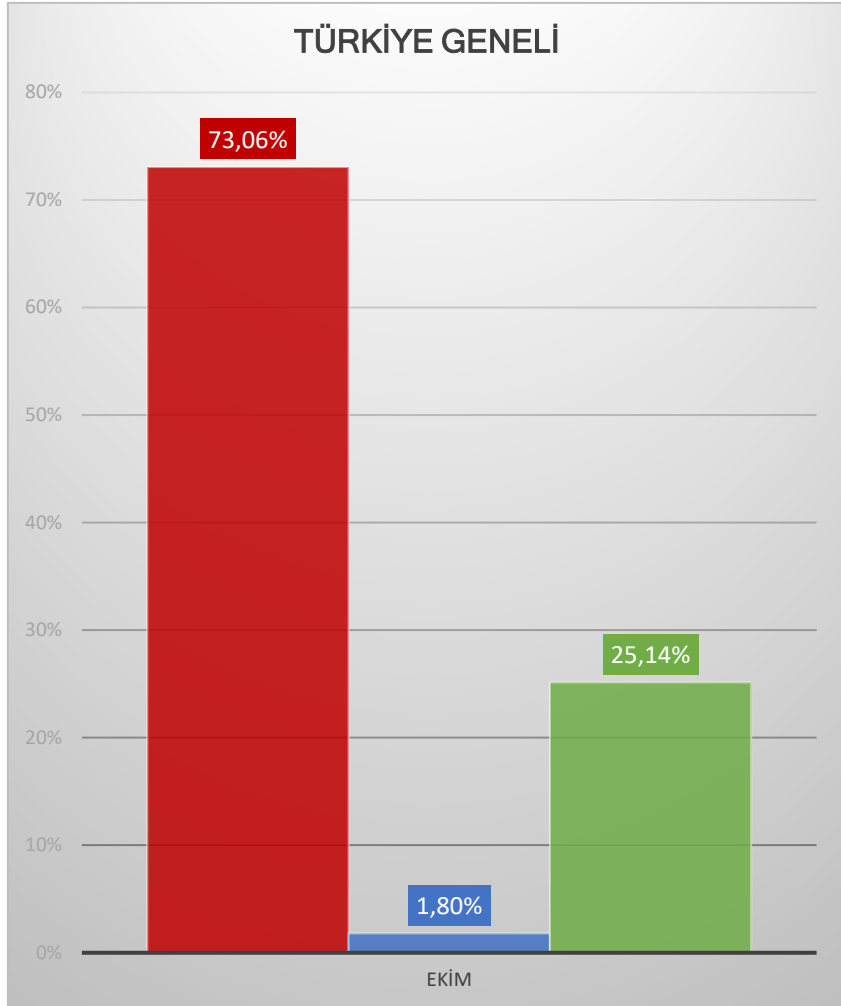
Polikliniğinize başvuran hastalarda enfeksiyon (solunum yolu enfeksiyonları, GİS enfeksiyonları vb.) trendinin geçmiş yıllara göre, son 3 ayını nasıl değerlendiriyorsunuz?



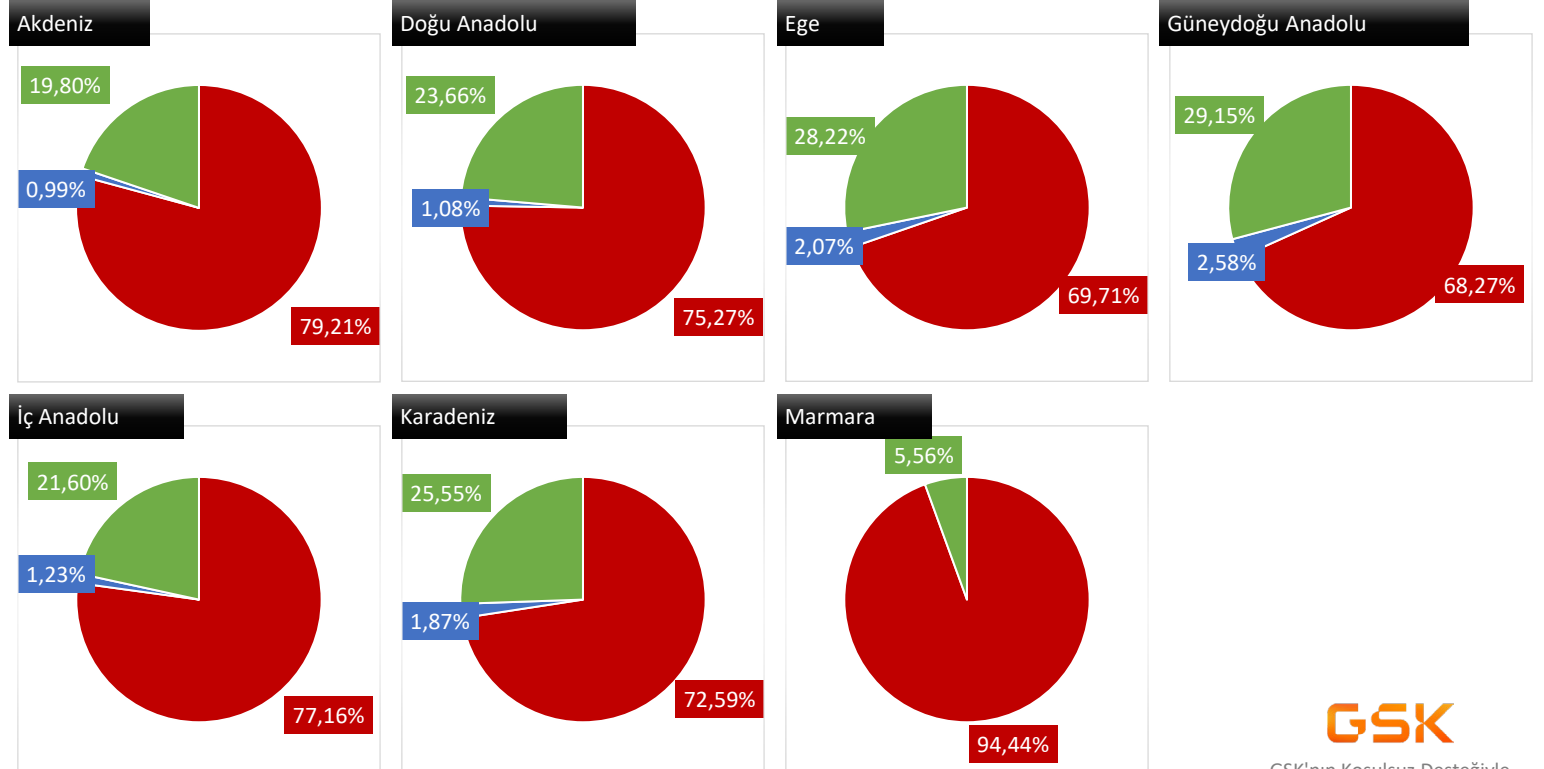
- Geçmiş yıllara göre %0 - %25 arasında artış var
- Geçmiş yıllara göre %25 üzerinde artış var
- Geçmiş yıllara göre %0 - %25 arasında azalış var
- Geçmiş yıllara göre %25 üzerinde azalış var



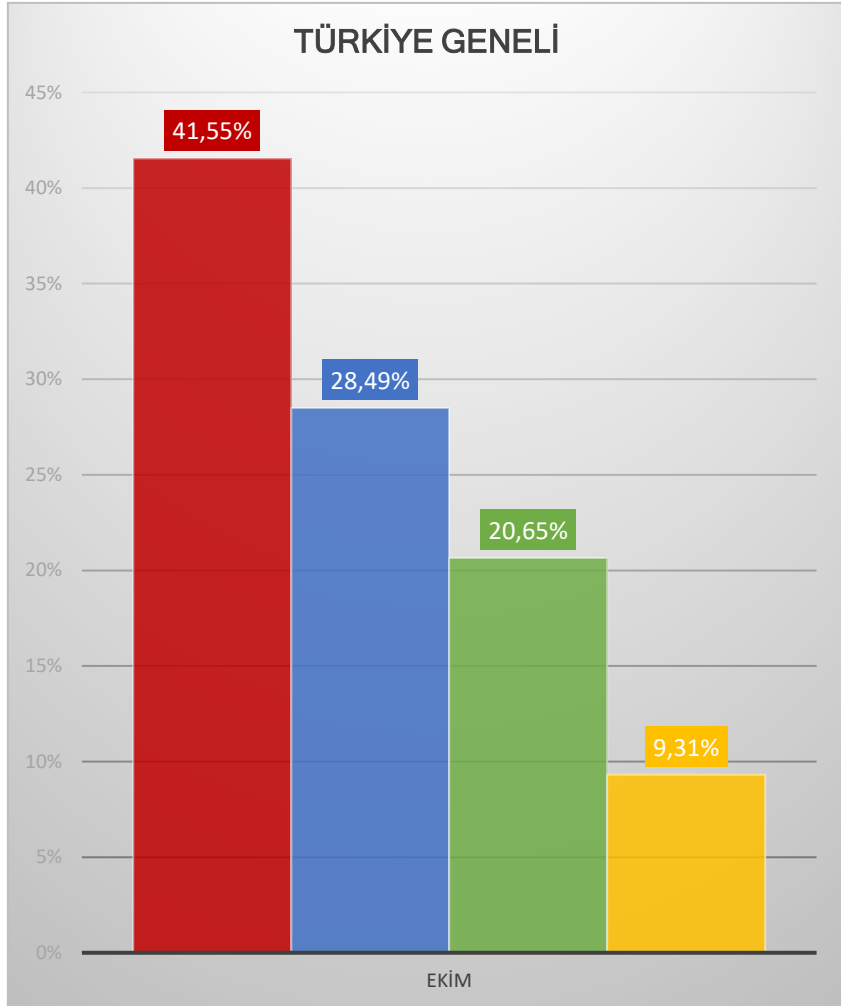
Bu yılki enfeksiyon (solunum yolu enfeksiyonları, GİS enfeksiyonları vb.) vakalarını değerlendirdiğinizde gelecek senelerde enfeksiyon trendiyle ilgili öngörünüz nedir?



- Enfeksiyonlar önümüzdeki yıllarda artış trendi gösterecektir
- Enfeksiyonlar önümüzdeki yıllarda azalış trendi gösterecektir
- Enfeksiyonlar önümüzdeki yıllarda stabil devam edecektir



Ateş şikayeti ile başvuran çocuk hastaları değerlendirdiğiniz zaman (aylık bazda), yüzde kaç tekrarlayan ateş şikayeti ile gelmektedir?



- %5'ten az
- %5-10
- %10-20
- %20 ve üzeri

